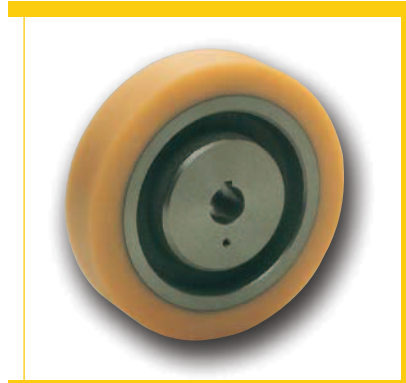


### Rollers, wheels and tyres for industry



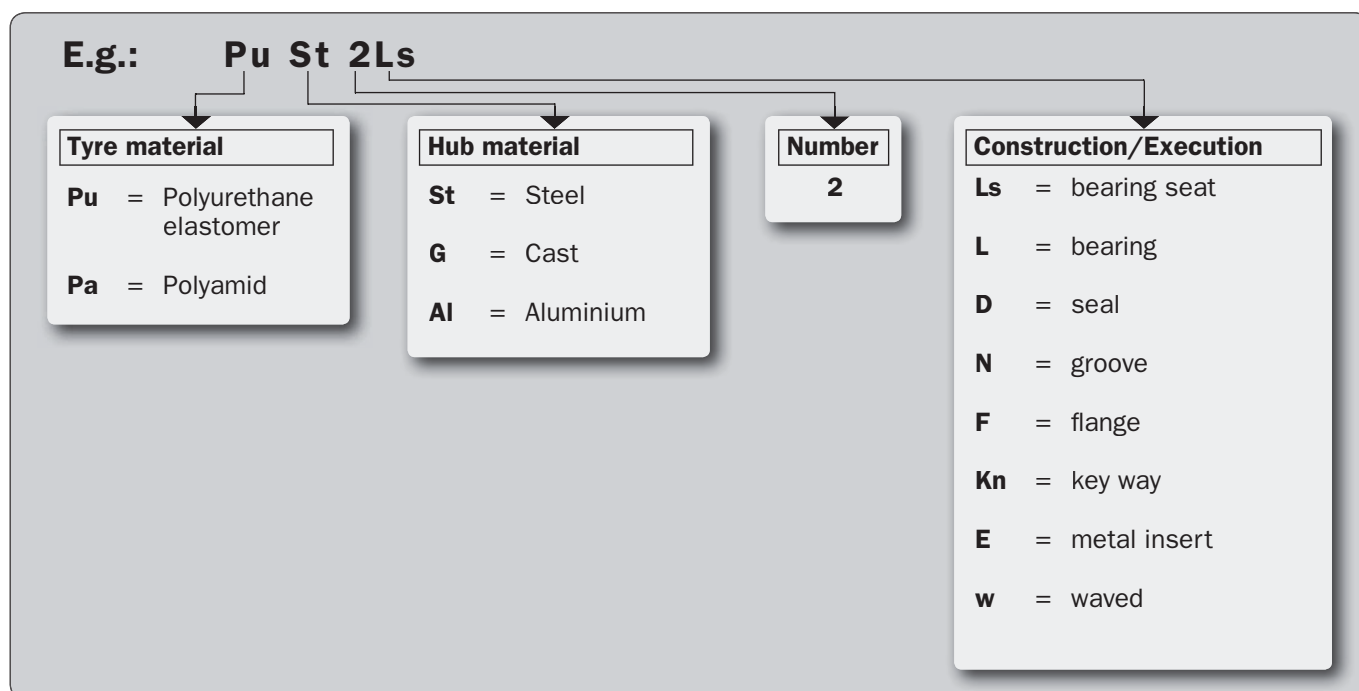
ACLATHAN® · ACLAN® · GRIPTHAN® · ACLAMID®



# Content

No.	Description of Article	Type	Number	Page
266/18 E	GRIPTHAN rollers, wheels and tyres		5 p.	3 - 7
266/3 E	ACLATHAN/Vulkollan rollers with bearing	Pu L	2 p.	8 - 9
266/2 E	ACLATHAN/Vulkollan rollers with bearing ACLAMID hub	Pu Pa L	1 p.	10
266/15 E	ACLATHAN/Vulkollan rollers with plain bearing ACLAMID hub	Pu Pa GL	1 p.	11
266/1 E	ACLAMID rollers with bearing	Pa L	2 p.	12 - 13
266/13 E	ACLATHAN/Vulkollan rings and sleeves	Pu	4 p.	14 - 17
266/4 E	ACLATHAN/Vulkollan rollers with bearing	Pu St L	3 p.	18 - 20
266/14 E	ACLATHAN/Vulkollan rollers with bearing seat	Pu St Ls	2 p.	21 - 22
266/16 E	ACLATHAN/Vulkollan rollers with bearing	Pu G 2L/Pu St 2L/Pu Al 2L	3 p.	23 - 25
266/11 E	ACLATHAN/Vulkollan rollers with bearing seat	Pu G 2Ls/Pu St 2Ls/Pu Al 2Ls	7 p.	26 - 32
266/10 E	ACLATHAN/Vulkollan complete rollers with special seal	Pu St 2LD	2 p.	33 - 34
266/9 E	ACLATHAN/Vulkollan complete rollers with bearing seat	Pu St 2Ls	1 p.	35
266/19 E	ACLATHAN/Vulkollan complete rollers for high speed	Pu Al 2 LD	2 p.	36 - 37
266/5 E	ACLATHAN/Vulkollan traction wheels with key way	Pu G Kn/Pu St Kn	2 p.	38 - 39
266/12 E	ACLATHAN/Vulkollan traction wheels with flange mounting bores	Pu G F	2 p.	40 - 41
266/6 E	ACLATHAN/Vulkollan tyres, cylindrical (with/without profile)	Pu St	5 p.	42 - 46
266/7 E	ACLATHAN/Vulkollan tyres, conical (symmetrical/asymmetrical)	Pu E	2 p.	47 - 48
266/8 E	ACLATHAN/Vulkollan tyres, undulated I.D.	Pu Ew	1 p.	49
266/17 E	ACLATHAN/Vulkollan or ACLAMID profile rollers with/without bearing	Pa N L/Pu N L	2 p.	50 - 51

## Explanation ACLA type description



# GRIPTHAN® rollers, wheels and tyres

**GRIPTHAN:**

**The roller tread with high traction and grip**

GRIPTHAN is a specially developed PUR Elastomer for rollers, wheels and tyres. Basically GRIPTHAN is used with a shore hardness of 90 Shore A due to the low E-Modul.

GRIPTHAN rollers convince with high traction and curve stability. Also they shows an excellent running performance. Uneven floors and edgeshocks are no problem, due to the high damping poperties of GRIPTHAN.

Thanks to above mentioned properties GRIPTHAN rollers are excellent for using in wet rooms, coolrooms and anywhere else where traction and grip is required.

**Important properties of GRIPTHAN:**

- high elasticity
- high coefficient of friction
- high load capacity
- extremely tear resistant
- no chalking
- excellent tear strength
- low permanent deformation
- temperature range between -40°C to +80°C, short period up to +100°C
- good resistance against mineral oil, grease, gasoline and ozon



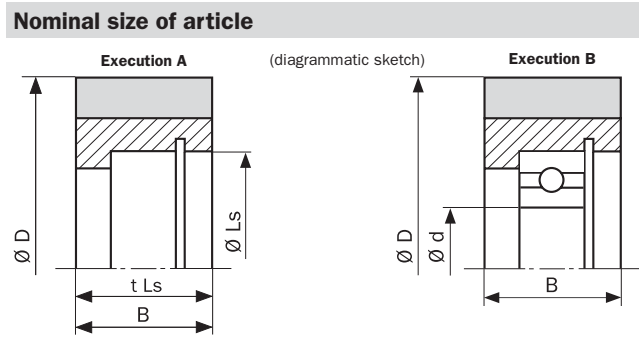
**GRIPTHAN rollers and wheels are available in many executions for all industry fields.**

# GRIPTHAN® rollers with/without bearing, steel hub; Pu St L/Pu St Ls

**Tyre**  
Polyurethane elastomer,  
ca. 75 Shore A

**Properties**

- high load capacity
- extremely abrasion resistant
- elastic damping
- silent running
- no chalking



**Remarks**

- 1) I.D. can be modified by using bushes
- 2) in kg at 0,6 m/s straight running. Max. load for ball bearings as per manufacturer
- 3) other bearings as per DIN on request
- 4) rollers with retaining ring may have a crowned tread

D	d <sup>1)</sup>	B	Exec.	Description	Bearing seat	Retaining ring	Load <sup>2)</sup>	Bearing <sup>3), 4)</sup>	Art. No.
60		20	A	60 x 20	42 x 16	X	30		140416.06
64	12	17	B	64/12 x 17		X	25	6201-2RS	143027
125		26	A	125 x 26	55 x 23		80		142952

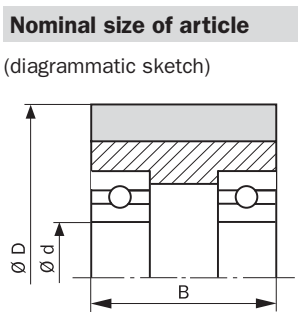
**Dimensions in mm. Further dimensions, other hardnesses Shore A and special executions on request.**

# GRIPTHAN® rollers with bearing; Pu G 2L/Pu St 2L/Pu Al 2L

**Tyre**  
Polyurethane elastomer,  
ca. 75 Shore A

**Properties**

- extremely abrasion resistant
- elastic damping
- silent running
- no chalking



**Remarks**

- 1) Pu G 2L = **cast**  
Pu St 2L = **steel**  
Pu Al 2L = **aluminium**
- 2) in kg at 0,6 km/h straight running. Max. load for ball bearings as per manufacturer
- 3) other bearings as per DIN on request

D	d	B	Description	Ececution <sup>1)</sup>	Load <sup>2)</sup>	Bearing <sup>3)</sup>	Art. No.
25	5	15	25/5 x 15	Pu St 2L	8	625-ZZ	142905
80	20	45	80/20 x 45	Pu St 2L	75	6204-2RS	143046
100	12	40	100/12 x 40	Pu Al 2L, ballig R 80	65	6201-ZZ	142010.04
148	25	38/40	148/25 x 38/40	Pu G 2L, ballig R 200	110	6205-2RS	141955.02
150	20	54/60	150/20 x 54/60	Pu Al 2L, ballig R 100	120	6204-2RS	142664.03
160	20	50/58,5	160/20 x 50/58,5	Pu Al 2L	160	6204-ZZ	142543.02
175	20	50/58,5	175/20 x 50/58,5	Pu Al 2L, ballig R 100	170	6204-ZZ	142951
200	25	40	200/25 x 40	Pu G 2L, ballig R 200	130	6205-2RS	142417.03
200	20	51/60	200/20 x 51/60	Pu Al 2L	200	6204-ZZ	142545.02
250	25	80/84,7	250/25 x 80/84,7	Pu G 2L	325	6006	141765.03

**Dimensions in mm. Further dimensions, other hardnesses Shore A and special executions on request.**



# GRIPTHAN® complete rollers with special seal; Pu G 2LD/Pu St 2LD

### Tyre

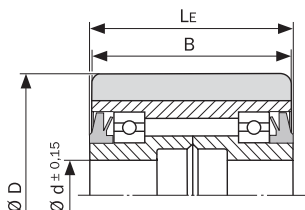
Polyurethane elastomer,  
ca. 75 Shore A

### Properties

- extremely abrasion resistant
- elastic damping
- silent running
- no chalking
- spray water and dust proof

### Nominal size of article

(diagrammatic sketch)



### Remarks

- I.D. can be modified by using bushes
- in kg at 0,6 km/h straight running. Max. load for ball bearings as per manufacturer
- other bearings as per DIN on request

D	d <sup>1)</sup>	B	L <sub>E</sub>	Description	Load <sup>2)</sup>	Bearing <sup>3)</sup>	Art. No.
85	17	70	75	85/17 x 70/75	120	6006-2RS	140935.17
90	17	91	96	90/17 x 91/96	170	4 x 6006-2RS	142901.03
90	20	91	96	90/20 x 91/96	170	4 x 6006-2RS	142901.04
90	30	91		90/30 x 91	170	4 x 6006-2RS	142901.01

**Dimensions in mm. Further dimensions, other hardnesses Shore A and special executions on request.**

# GRIPTHAN® drive wheel with key way; Pu G Kn/Pu St Kn

### Tyre

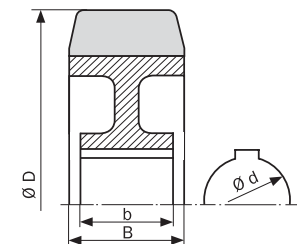
Polyurethane elastomer,  
ca. 75 Shore A

### Properties

- high load bearing capacity
- extremely abrasion resistant
- elastic damping
- silent running
- no chalking
- temperature range -30°C to +80°C (-22°F to 176°F)

### Nominal size of article

(diagrammatic sketch)



### Remarks

- in kg at 6 km/h straight running

### Hint

Bore ø d and key way size on request

D	d	B	b	Description	Load <sup>1)</sup>	Art. No.
25	5	15		25/5 x 15	7	142904

**Dimensions in mm. Further dimensions, other hardnesses Shore A and special executions on request.**

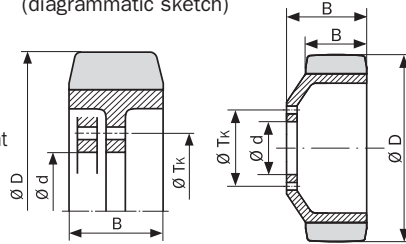
## GRIPTHAN® drive wheel with mounting holes; Pu G F

### Tyre

Polyurethane elastomer, ca. 75 Shore A

### Nominal size of article

(diagrammatic sketch)



### Remarks

<sup>1)</sup> in kg at 6 km/h straight running

### Hint

Tolerances for I.D and position of the flange on request

### Properties

- high load bearing capacity
- extremely abrasion resistant
- elastic damping
- silent running
- no chalking

D	d	B	Description	Tyre	Load <sup>1)</sup>	T <sub>k</sub>	Number of bores	Art. No.
215	60	82/89	215/60 x 82/89	plain	275	92	5	141 656.02
230	45	82	230/45 x 82	plain	315	70	5 + 3 M10	141 650.05
230	45	70/82	230/45 x 70/82	plain	270	70	5 + 3 M10	141 003.12
230	65	80	230/65 x 80	plain	280	95	4	142 665.01
230	65	90	230/65 x 90	plain	320	95	4	142 304.01
233	45	85/90,5	233/45 x 85/90,5	crowned R 600	240	70	5	142 198.03
233	50	85	233/50 x 85	plain	300	80	4	141 535.01
240	80	75	240/80 x 75	plain	285	112	5	142 357.01
250	50	80	250/50 x 80	plain	320	-	Through hole	142 737
250	80	75	250/80 x 75	plain	300	112	4	141 578.01
250	80	80	250/80 x 80	crowned R 245	235	112	5	141 728.01
254	80	100	254/80 x 100	plain	410	112	5	140 604.01
270		95/100	270 x 95/100	plain	395	170	12 + 2 M8	142 313.01
310	80	104	310/80 x 104	plain	445	112	5	140 982.02
343	80	114	343/80 x 114	plain	585	112	7	140 390.05
343	80	136	343/80 x 136	plain	700	112	7	142 583.01
343	90	136	343/90 x 136	plain	710	125	7	142 583.06
343	80	140	343/80 x 140	plain	720	112	7	140 405.08

Dimensions in mm. Further dimensions, other hardnesses Shore A and special executions on request.

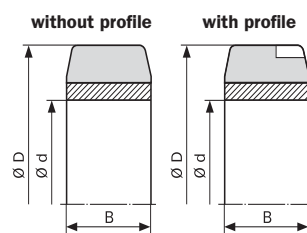
## GRIPTHAN® cylindrical tyre; Pu St

### Tyre

Polyurethane elastomer, ca. 75 Shore A

### Nominal size of article

(diagrammatic sketch)



### Remarks

<sup>1)</sup> I.D. of the steel band suitable for hub O.D. h11 press-fit

<sup>2)</sup> in kg at 6 km/h straight running

### Properties

- high load bearing capacity
- extremely abrasion resistant
- elastic damping
- silent running
- no chalking

D	d <sup>1)</sup>	B	Description	Load <sup>2)</sup>	Art. No.
125	75	40	125/75 x 40	95	140 265.01
160	100	50	160/100 x 50	145	140 267.01
230	170	75	230/170 x 75	315	140 394.01
250	170	80	250/170 x 80	345	140 010.01
254	165,1	127	254/165,1 x 127	545	141 014.04
280	190	60	280/190 x 60	280	141 986.01
300	230	100	300/230 x 100	560	140 228.02
330	203	114	330/203 x 114	550	142 352.N

Dimensions in mm. Further dimensions, other hardnesses Shore A and special executions on request.



# ACLATHAN<sup>®</sup>/Vulkollan<sup>®</sup> rollers with bearing Pu L

## Tyre

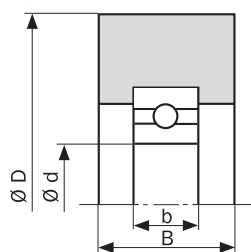
Polyurethane elastomer,  
ca. 94 Shore A

## Properties

- extremely abrasion resistant
- elastic damping
- silent running
- no chalking
- temperature range -30°C to +80°C (-22°F to 176°F)

## Nominal size of article

(diagrammatic sketch)



## Remarks

- <sup>1)</sup> I.D. can be modified by using bushes
- <sup>2)</sup> other ball bearings as per DIN standard on request



D	d <sup>1)</sup>	B	b	Description	Tyre	Bearing <sup>2)</sup>	Art. No.
20	5	7	5	20/5 x 7/5	cylindrical	625-ZZ	60 270
22	5	7	5	22/5 x 7/5	cylindrical	625-ZZ	60 115
23	6	10	6	23/6 x 10/6	crowned R 11,5	626-ZZ	60 191
24,5	7	8	6	24,5/7 x 8/6	cylindrical	607-ZZ	60 256
26	6	15	6	26/6 x 15/6	cylindrical	626-ZZ	60 116
26	6	15	6	26/6 x 15/6	cylindrical	626-ZZ	60 179
26	6	15	6	26/6 x 15/6	cylindrical	626-2RS	60 154
26	7	10	6	26/7 x 10/6	crowned R 20	607-2RS	60 279
28	8	11	7	28/8 x 11/7	cylindrical	608-2RS	60 147
28	8	11	7	28/8 x 11/7	crowned R 14	608-ZZ	60 117
28	8	11	7	28/8 x 11/7	cylindrical	608-ZZ	60 118
30	9	11	7	30/9 x 11/7	cylindrical	609-2RS	60 324
32	10	12	8	32/10 x 12/8	crowned R 40	6000-2RS	60 251
32	12	12	8	38/12 x 12/8	cylindrical	6001-ZZ	60 290
34	10	14	8	34/10 x 14/8	crowned R 40	6000-2RS	60 301
34,7	10	10	8	34,7/10 x 10/8	crowned R 6,5	6000-ZZ	60 119
36	12	12	8	36/12 x 12/8	crowned R 60	6001-ZZ	60 120
36	12	12	8	36/12 x 12/8	crowned R 60	6001-2RS	60 171
38	10	27	9	38/10 x 27/9	cylindrical	6200-ZZ	60 121
38	12	14	10	38/12 x 14/10	cylindrical	6201-ZZ	60 168
40	10	16	8	40/10 x 16/8	cylindrical	6000-ZZ	60 190.01
40	10	13	9	40/10 x 13/9	cylindrical	6200-ZZ	60 214
40	10	20	9	40/10 x 20/9	cylindrical	6200-ZZ	60 149
40	12	14	10	40/12 x 14/10	cylindrical	6201-2RS	60 198
44	8	11	7	44/8 x 11/7	cylindrical	608-ZZ	60 122
44	12	12	8	44/12 x 12/8	cylindrical	6001-ZZ	60 182
44	10	16	8	44/10 x 16/8	cylindrical	6000-ZZ	60 123
44	12	16	8	44/12 x 16/8	cylindrical	6001-ZZ	60 124
46	12	16	10	46/12 x 16/10	cylindrical	6201-ZZ	60 126
46	12	14	10	46/12 x 14/10	crowned R 7	6201-ZZ	60 128

Dimensions in mm. Further dimensions, other PU-qualities, other hardnesses Shore A and special executions on request.



**Tyre**

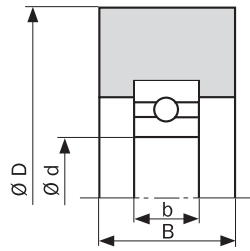
Polyurethane elastomer, ca. 94 Shore A

**Properties**

- extremely abrasion resistant
- elastic damping
- silent running
- no chalking
- temperature range -30°C to +80°C (-22°F to 176°F)

**Nominal size of article**

(diagrammatic sketch)



**Remarks**

- <sup>1)</sup> I.D. can be modified by using bushes
- <sup>2)</sup> other ball bearings as per DIN standard on request



D	d <sup>1)</sup>	B	b	Description	Tyre	Bearing <sup>2)</sup>	Art. No.
50	10	13	9	50/10 x 13/9	cylindrical	6200-ZZ	60129
50	10	20	9	50/10 x 20/9	cylindrical	6200-ZZ	60130
54	15	20	11	54/15 x 20/11	cylindrical	6202-ZZ	60131
55	12	20	10	55/12 x 20/10	cylindrical	6201-ZZ	60132
60	12	16	10	60/12 x 16/10	crowned R 100	6201-ZZ	60255
60	17	20	12	60/17 x 20/12	cylindrical	6203-ZZ	60134
62	17	20	12	62/17 x 20/12	crowned R 60	6203-ZZ	60135
62	17	20	14	62/17 x 20/14	cylindrical.	6303-ZZ	60136
68	12	17	10	68/12 x 17/10	cylindrical	6201-ZZ	60002.01
70	10	18	11	70/10 x 18/11	ballig R 8	6300-ZZ	60140
70	12	27	10	70/12 x 27/10	crowned R 60	6201-ZZ	60138
70	17	17	12	70/17 x 17/12	cylindrical	6203-ZZ	60139
70	20	25	14	70/20 x 25/14	cylindrical	6204-ZZ	60311
75	17	20	12	75/17 x 20/12	crowned R 75	6203-ZZ	60197
75	17	20	14	75/17 x 20/14	cylindrical	6303-ZZ	60141
75	20	27	14	75/20 x 27/14	cylindrical	6204-ZZ	60142
78	12	12	8	78/12 x 12/8	cylindrical	6001-ZZ	60143
90	17	20	14	90/17 x 20/14	cylindrical	6303-ZZ	60145

**Dimensions in mm. Further dimensions, other PU-qualities, other hardnesses Shore A and special executions on request.**

Dimensions in mm. We reserve the right to change sizes. Further dimensions and special types on request.

Our verbal or written recommendations for any application as well as tests are carried out to the best of our knowledge. They are without engagement also as far as patent rights of third parties are concerned, and do not exempt you from checking the products sup-

plied by us to their suitability for the intended procedure and purpose.

Application, use and processing of the products are outside our control, and are exclusively the responsibility of the customer. Moreover our general sales conditions apply.



# ACLATHAN<sup>®</sup>/Vulkollan<sup>®</sup> rollers with bearing and ACLAMID<sup>®</sup> hub Pu Pa L

### Tyre

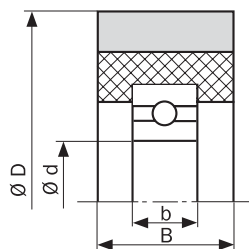
Polyurethane elastomer,  
ca. 90 - 95 Shore A

### Properties

- extremely abrasion resistant
- elastic damping
- silent running
- higher load capacity as execution in Pu L
- no chalking
- temperature range -30°C to +80°C (-22°F to 176°F)

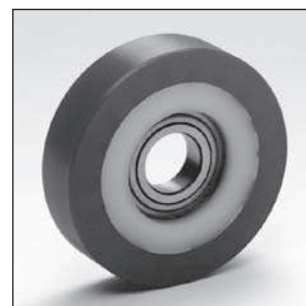
### Nominal size of article

(diagrammatic sketch)



### Remarks

- <sup>1)</sup> I.D. can be modified by using bushes
- <sup>2)</sup> other ball bearings as per DIN standard on request



D	d <sup>1)</sup>	B	b	Description	Tyre	Bearing <sup>2)</sup>	Art. No.
46	9	16	8	46/9 x 16/8	crowned R 25	629-ZZ	60 125
50	10	20	9	50/10 x 20/9	crowned R 50	6200-2RS	60 266
60	9	16	8	60/9 x 16/8	crowned R 25	629-ZZ	60 133
76	20	25	14	76/20 x 25/14	cylindrical	6204-ZZ	60 043
80	20	25	12	80/20 x 25/12	cylindrical	6004-2RS	60 299
80	20	25	12	80/20 x 25/12	cylindrical	6004-2RS	60 183
80	20	25	12	80/20 x 25/12	cylindrical	6004-ZZ	60 009
80	20	25	14	80/20 x 25/14	cylindrical	6204-ZZ	60 162
80	20	25	14	80/20 x 25/14	cylindrical	6204-2RS	60 223
80	25	25	15	80/25 x 25/15	cylindrical	6205-ZZ	60 008
80	25	25	15	80/25 x 25/15	cylindrical	6205-2RS	60 184
100	17	25	12	100/17 x 25/12	cylindrical	6203-ZZ	60 004
100	20	25	14	100/20 x 25	cylindrical	6204-2RS	141 436
110	17	20	14	110/17 x 20/14	crowned R 100	6303-ZZ	60 208
120	25	35	15	120/25 x 35/15	cylindrical	6205-ZZ	60 015
120	25	35	15	120/25 x 35/15	cylindrical	6205-2RS	60 181
130	17	20	12	130/17 x 20/12	crowned R 100	6203-ZZ	60 019

**Dimensions in mm. Further dimensions, other PU-qualities, other hardnesses Shore A and special executions on request.**

Dimensions in mm.  
We reserve the right to change sizes.  
Further dimensions and special types on request.

Our verbal or written recommendations for any application as well as tests are carried out to the best of our knowledge. They are without engagement also as far as patent rights of third parties are concerned, and do not exempt you from checking the products sup-

plied by us to their suitability for the intended procedure and purpose.

Application, use and processing of the products are outside our control, and are exclusively the responsibility of the customer. Moreover our general sales conditions apply.

# ACLATHAN®/Vulkollan® rollers with plain bearing and ACLAMID® hub Pu Pa GL

### Tyre

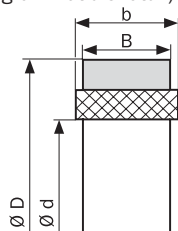
Polyurethane elastomer,  
ca. 93 Shore A

### Properties

- extremely abrasion resistant
- elastic damping
- silent running
- no chalking
- temperature range -30°C to +80°C (-22°F to 176°F)

### Nominal size of article

(diagrammatic sketch)



### Remarks

<sup>4)</sup> I.D. can be modified  
by using bushes



D	d <sup>4)</sup>	B	b	Description	Tyre	Art. No.
40	14,1	12,5	12,5	40/14,1 x 12,5/12,5		60342
45	14,2	17	19	45/14,2 x 17/19	crowned R 50	60228
49,5	12	6	6	49,5/12 x 6/6	crowned R 3	60262
50	8,1	17	19	50/8,1 x 17/19		60157
50	10	17	19	50/10 x 17/19		60158
50	10	17	19	50/10 x 17/19		60264
50	13,05	16	17,9	50/13,05 x 16/17,9		60061
50	13,05	16	17,9	50/13,05 x 16/17,9		60150
50	17	17	19	50/17 x 17/19		60178
70	22,1	25	35	70/22,1 x 25/35		60050
70	22,15	24	25,5	70/22,15 x 24/25,5		60103
70	22,15	22	32	70/22,15 x 22/32		60155
70	23	22	27,2	70/23 x 22/27,2		140998.01
70	25	22	27,5	70/25 x 22/27,5	crowned R 110	60174
70	25	22	27,2	70/25 x 22/27,2		140998
70	26	22	27,2	70/26 x 22/27,2		140998.02
75	25	28	30	75/25 x 28/30	crowned R 50	60053
75	25	26,5	29	75/25 x 26,5/29	crowned R 50	60241
82	35		23	82/35 x 23		60224
85	28	27,5	30	85/28 x 27,5/30	crowned R 50	60060
112	26,4	27	34	112/26,4 x 27/34		60156
120	48	35	35	120/48 x 35/35		60221
130	30	20	20	130/30 x 20/20	crowned	60240

**Dimensions in mm. Further dimensions, other PU-qualities, other hardnesses Shore A and special executions on request.**

Dimensions in mm.  
We reserve the right to  
change sizes.  
Further dimensions  
and special  
types on request.

Our verbal or written recommenda-  
tions for any application as well as  
tests are carried out to the best  
of our knowledge. They are without  
engagement also as far as patent  
rights of third parties are con-  
cerned, and do not exempt you  
from checking the products sup-

plied by us to their suitability for  
the intended procedure and purpose.

Application, use and processing of  
the products are outside our con-  
trol, and are exclusively the respon-  
sibility of the customer. Moreover  
our general sales conditions apply.



# ACLAMID® rollers with bearing Pa L

### Tyre

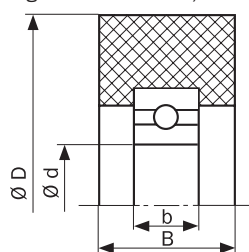
Special polymere (e.g. Polyamid) with high young modulus

### Properties

- low rolling resistance
- less noise than steel rollers
- high surface pressure
- small deformation

### Nominal size of article

(diagrammatic sketch)



### Remarks

- <sup>1)</sup> I.D. can be modified by using bushes
- <sup>2)</sup> other ball bearings as per DIN standard on request



D	d <sup>1)</sup>	B	b	Description	Tyre	Bearing <sup>2)</sup>	Art. No.
22	5	7	5	22/5 x 7/5	cylindrical	625-ZZ	80 162
26	6	15	6	26/6 x 15/6	cylindrical	626-ZZ	80 163
26	7	10	6	26/7 x 10/6	crowned R 20	607-ZZ	80 275
28	8	11	7	28/8 x 11/7	cylindrical	608-ZZ	80 165
28	8	11	7	28/8 x 11/7	crowned R 14	608-ZZ	80 164
30	9	11	7	30/9 x 11/7	cylindrical	609-2RS	80 253
30	10	10	8	30/10 x 10/8	cylindrical	6000-ZZ	80 212
34	10	14	8	34/10 x 14/8	crowned R 40	6000-ZZ	80 226
34,7	10	10	8	34,7/10 x 10/8	crowned R 6,5	6000-ZZ	80 166
36	10	13	9	36/10 x 13/9	cylindrical	6200-ZZ	80 223
36	12	12	8	36/12 x 12/8	crowned R 60	6001-ZZ	80 167
38	10	27	9	38/10 x 27/9	cylindrical	6200-ZZ	80 168
38	12	16	10	38/12 x 16/10	cylindrical	6201-ZZ	80 238
40	12	14	10	40/12 x 14/10	cylindrical	6201-ZZ	80 215
40	12	16	10	40/12 x 16/10	cylindrical	6201-ZZ	80 199
44	12	16	8	44/12 x 16/8	cylindrical	6001-ZZ	80 171
45	15	16	11	45/15 x 16/11	crowned R 50	6202-2RS	80 279
46	12	14	10	46/12 x 14/10	crowned R 7	6201-ZZ	80 175
46	12	16	10	46/12 x 16/10	cylindrical	6201-ZZ	80 173
47,2	15	20	11	47,2/15 x 20/11	cylindrical	6202-ZZ	80 245
47,2	12	20	10	47,2/12 x 20/10	cylindrical	6201-ZZ	80 250
50	10	13	9	50/10 x 13/9	cylindrical	6200-ZZ	80 176
50	10	20	9	50/10 x 20/9	cylindrical	6200-ZZ	80 177
50	12	15	8	50/12 x 15/8	cylindrical	6001-ZZ	80 244
50	17	20	10	50/17 x 20/10	cylindrical	6003-ZZ	80 257.01
51	12	15	10	51/12 x 15/10	cylindrical	6201-ZZ	80 220
52	15	20	11	52/15 x 20/11	cylindrical	6202-ZZ	80 288
54	15	20	11	54/15 x 20/11	cylindrical	6202-ZZ	80 178
54	20	22	12	54/20 x 22/12	crowned R 50	6004-ZZ	80 320
55	12	20	10	55/12 x 20/10	cylindrical.	6201-ZZ	80 179

Dimensions in mm. Further dimensions, other plastic, other hardnesses Shore A and special executions on request.

**Tyre**

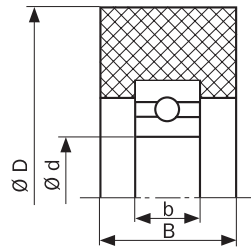
Special polymere (e.g. Polyamid) with high young modulus

**Properties**

- low rolling resistance
- less noise than steel rollers
- high surface pressure
- small deformation

**Nominal size of article**

(diagrammatic sketch)



**Remarks**

- <sup>1)</sup> I.D. can be modified by using bushes
- <sup>2)</sup> other ball bearings as per DIN standard on request



D	d <sup>1)</sup>	B	b	Description	Tyre	Bearing <sup>2)</sup>	Art. No.
60	12	16	10	60/12 x 16/10	crowned R 25	6201-ZZ	80146
60	12	19	10	60/12 x 19/10	crowned R 6,5	6201-ZZ	80194
60	17	20	12	60/17 x 20/12	cylindrical	6203-ZZ	80181
62	17	20	12	62/17 x 20/12	crowned R 60	6203-ZZ	80182
65	12	17	10	65/12 x 17/10	cylindrical	6201-ZZ	80136
65	17	17	14	65/17 x 17/14	cylindrical	6303-ZZ	80323
68	12	17	10	68/12 x 17/10	cylindrical	6201-ZZ	80184
70	10	18	9	70/10 x 18/9	crowned R 8	6300-ZZ	80187
70	12	27	10	70/12 x 27/10	crowned R 60	6201-ZZ	80185
70	17	17	14	70/17 x 17/14	cylindrical	6303-ZZ	80186
75	17	20	14	75/17 x 20/14	cylindrical	6303-ZZ	80188
75	20	20	14	75/20 x 20/14	crowned R 75	6204-ZZ	80284
75	20	27	14	75/20 x 27/14	cylindrical	6204-ZZ	80189
78	12	12	8	78/12 x 12/8	cylindrical	6001-ZZ	80190
79	20	8/20	14	79/20 x 8/20/14	cylindrical	6204-ZZ	80214
81	20	25	14	81/20 x 25/14	cylindrical	6204-ZZ	80231
82	17	22,5	12	82/17 x 22,5/12	crowned R 82	6203	80202
84	20	16	12	84/20 x 16/12	cylindrical	6004-ZZ	80251
90	17	20	10	90/17 x 20/10	cylindrical	6003-ZZ	80191
90	17	20	14	90/17 x 20/14	cylindrical	6303-ZZ	80192
100	17	20	12	100/17 x 20/12	cylindrical	6203-ZZ	80138

Dimensions in mm. Further dimensions, other plastic, other hardnesses Shore A and special executions on request.

Dimensions in mm. We reserve the right to change sizes. Further dimensions and special types on request.

Our verbal or written recommendations for any application as well as tests are carried out to the best of our knowledge. They are without engagement also as far as patent rights of third parties are concerned, and do not exempt you from checking the products sup-

plied by us to their suitability for the intended procedure and purpose.

Application, use and processing of the products are outside our control, and are exclusively the responsibility of the customer. Moreover our general sales conditions apply.



# ACLATHAN<sup>®</sup>/Vulkollan<sup>®</sup> rings and sleeves Pu

## Tyre

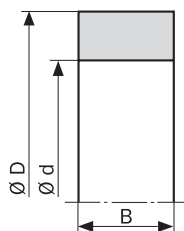
Polyurethane elastomer,  
ca. 93 Shore A  
or ca. 80 Shore A (s. table)

## Properties

- high load bearing capacity
- extremely abrasion resistant
- elastic damping
- silent running
- no chalking

## Nominal size of article

(diagrammatic sketch)



## Hints

I.D. and O.D. can be modified  
by mechanical working as per  
customers drawing or sketch.  
All dimensions as per DIN 7715.

Beside these dimensions more  
than 1.200 models are available  
on request.



D	d	B max	Description	Shore A	Art. No.	F.No.
7,35	2,54	56	7,35/2,54 x 56			51294
8	4	60	8/4 x 60			51657
10	2	30	10/2 x 30			51252
10	5,5	62	10/5,5 x 62			51380
12	3	120	12/3 x 120			51890
12	4	68	12/4 x 68			51493
12,3	7	44	12,3/7 x 44			51897
13,5	4,7	50	13,5/4,7 x 50		196 516	
15	4	80	15/4 x 80			51921
15	6	250	15/6 x 250			52243
15,4	10	44	15,4/10 x 44			51687
16	6,5	80	16/6,5 x 80		500 001	
16	10,3	5,5	16/10,3 x 5,5		197 862	
16,3	10,3	50	16,3/10,3 x 50			51887
17	8,4	120	17/8,4 x 120			52165
17	13	60	17/13 x 60			51491
18	3	90	18/3 x 90			51843
18,5	12,7	64	18,5/12,7 x 64			51586
20	4	120	20/4 x 120			51808
20	6,5	8,7	20/6,5 x 8,7	<b>80</b>	194 589	
20	8,5	100	20/8,5 x 100		500 002	
20	8,5	300	20/8,5 x 300		197 339	
20	10,1	105	20/10,1 x 105			51831
20	14	70	20/14 x 70			51551
20,5	6,5	88	20,5/6,5 x 88			52154
22	11	200	22/11 x 200			51862
22	15	100	22/15 x 100			51978
24	4,5	48	24/4,5 x 48			51472
24	5,7	70	24/5,7 x 70	<b>80</b>	197 765.N	
24,5	12,5	125	24,5 x 12,5 x 125			51121
25	8,5	100	25/8,5 x 100		500 003	

Dimensions in mm. Further dimensions, other PU-qualities, other hardnesses Shore A and special executions on request.

**Tyre**

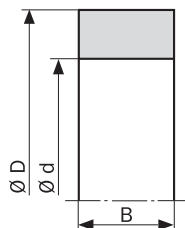
Polyurethane elastomer, ca. 93 Shore A or ca. 80 Shore A (s. table)

**Properties**

- high load bearing capacity
- extremely abrasion resistant
- elastic damping
- silent running
- no chalking

**Nominal size of article**

(diagrammatic sketch)



**Hints**

I.D. and O.D. can be modified by mechanical working as per customers drawing or sketch. All dimensions as per DIN 7715.

Beside these dimensions more than 1.200 models are available on request.



D	d	B max	Description	Shore A	Art. No.	F.No.
25	10,5	100	25/10,5 (+17,7) x 100			51636
25	10,5	620	25/10,5 x 620		500 004.02	
25	14,5	100	25/14,5 x 100			51532
26	17	80	26/17 x 80			51714
28	10,5	150	28/10,5 x 150			52109
28,8	20,7	90	28,8/20,7 x 90			51875
30	7	6	30/7 x 6	80	197 834.N	
30	10	170	30/10 x 170			51659
30	15	230	30/15 x 230 + 400			51409
30	17	15	30/17 x 15	80	197 879	
30,5	20	30	30,5/20 x 30			51028
32	10	100	32/10 x 100			51643
32	13,5	32	32/13,5 x 32		190 113	
32	13,5	40	32/13,5 x 40		190 114	
32	13,5	50	32/13,5 x 50		500 006	
32	13,5	63	32/13,5 x 63		500 007	
32	26	130	32/26 x 130		500 014	
34,5	21	10	34,5/21 x 10	80	195275.N	
35	15,5	80	35/15,5 (+14) x 80			51410
35	25,5	220	35/25,5 x 220			51337
38	22	90	38/22 x 90			51388
40	10	70	40/10 x 70			51024
40	13,5	650	40/13,5 x 650		500 008.02	
40	20	25	40/20 x 25	80	191 021	
40	23	100	40/23 x 100			51798
40	31	75	40/31 x 75			51503
42	26	155	42/26 x 155			52015
45	16	100	45/16 x 100			51416
45	30	100	45/30 x 100			51697
48	17	120	48/17 x 120			52080
50	10	120	50/10 x 120			52163
50	22	200	50/22 x 200			52214
50	30	40	50/30 x 40			52902
50	40	130	50/40 x 130			51545
53	38	100	53/38 x 100			51379
55	33	120	55/33 x 120			51832
58,5	28	250	58,5/28 x 250			51320
60	12,5	130	60/12,5 x 130			51815
60	25	125	60/25 (+30/+31) x 125			51222
60	45	100	60/45 x 100			51790
62	32	140	62/32 x 140			51587
65	20	168	65/20 x 168			51608
65	38	150	65/38 x 150			51392
65,5	55,5	110	65,5/55,5 x 110			51830
68	12	100	68/12 x 100			51660

Dimensions in mm. Further dimensions, other PU-qualities, other hardnesses Shore A and special executions on request.

**Tyre**

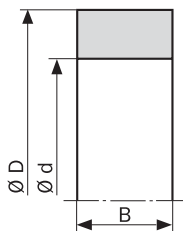
Polyurethane elastomer,  
ca. 93 Shore A  
or ca. 80 Shore A (s. table)

**Properties**

- high load bearing capacity
- extremely abrasion resistant
- elastic damping
- silent running
- no chalking

**Nominal size of article**

(diagrammatic sketch)



**Hints**

I.D. and O.D. can be modified by mechanical working as per customers drawing or sketch. All dimensions as per DIN 7715.

Beside these dimensions more than 1.200 models are available on request.



D	d	B max	Description	Shore A	Art. No.	F-No.
70	20	108	70/20 x 108			51316
72	60	200	72/60 x 200			52055
72,2	49,4	105	72,2/49,4 x 105	<b>80</b>	197 424.N	
75	55	100	75/55 x 100			52025
75	65	300	75/65 x 300			51378
80	20,5	35	80/20,5 x 35			52071
80	21	250	80/21 x 250		500 011	
80	30	81	80/30 (+32) x 81			51345
80	52	120	80/52 (+57) x 120			51475
80	70	350	80/70 x 350			51166
81	50	120	81/50 x 120		197 081.01	
85	35	100	85/35 x 100			51516
85	75	100	85/75 x 100			51726
90	40	120	90/40 x 120			52089
90	77	100	90/77 x 100			52115
95	37	120	95/37 x 120			52088
100	21	160	100/21 x 160		500 012	
100	21	160	100/21 x 160			51534
100	48	150	100/48 x 150			52037
100	65	145	100/65 x 145			52212
105	72	120	105/72 x 120			51466
108	96	120	108/96 x 120			51620
110	75	150	110/75 x 150			51672
112,5	35	140	112,5/35 x 140			51787
115	70	120	115/70 x 120			51512
115	90	150	115/90 x 150			51621
120	40	85	120/40 x 85			51437
120	60	145	120/60 x 145			51987
120	80	90	120/80 x 90			52124
125	27	125	125/27 (+31/+49/+97) x 125			52049
131	52	130	131/52 x 130			52182
135	99	140	135/99 x 140			51895
138,6	128	120	138,6/128 x 120			52200
140	102	120	140/102 x 120			52189
148,6	138	120	148,6/138 x 120			52199
150	125	150	150/125 x 150			51718
156,75	140,75	120	156,75/140,75 x 120			52052

Dimensions in mm. Further dimensions, other PU-qualities, other hardnesses Shore A and special executions on request.



**Tyre**

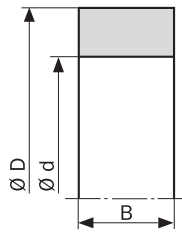
Polyurethane elastomer, ca. 93 Shore A or ca. 80 Shore A (s. table)

**Properties**

- high load bearing capacity
- extremely abrasion resistant
- elastic damping
- silent running
- no chalking

**Nominal size of article**

(diagrammatic sketch)



**Hints**

I.D. and O.D. can be modified by mechanical working as per customers drawing or sketch. All dimensions as per DIN 7715.

Beside these dimensions more than 1.200 models are available on request.



D	d	B <sub>max</sub>	Description	Shore A	Art. No.	F-No.
160	96	120	160/96 x 120			52063
160	142	100	160/142 x 100			51712
170	130	123	170/130 x 123			51996
180	160	44	180/160 x 44			51034
190	170	120	190/170 (+186/+188) x 120			51639
200	110	105	200/110 (+129) x 105			51509
205	158	100	205/158 x 100			51539
210	125	90	210/125 x 90			51596
220	200	72	220/200 x 72			51463
232	210	155	232/210 x 155			51525
240	224	120	240/224 x 120			52011
250	70	220	250/70 x 220			51955
270	250	60	270/250 x 60			5293
290	270	105	290/270 x 105			52215
300	250	100	300/250 x 100			51716
318	298	140	318/298 x 140			52235
360	230	152	360/230 x 152			51583
401	388	120	401/388 x 120			51720
410	336	100	410/336 x 100			5746
460	430	100	460/430 x 100			51737
550	470	30	550/470 x 30			52095
642	586	120	642/586 x 120			52166

**Dimensions in mm. Further dimensions, other PU-qualities, other hardnesses Shore A and special executions on request.**

TB 266/13 E, 02.10

Dimensions in mm. We reserve the right to change sizes. Further dimensions and special types on request.

Our verbal or written recommendations for any application as well as tests are carried out to the best of our knowledge. They are without engagement also as far as patent rights of third parties are concerned, and do not exempt you from checking the products supplied

by us to their suitability for the intended procedure and purpose.

Application, use and processing of the products are outside our control, and are exclusively the responsibility of the customer. Moreover our general sales conditions apply.



# ACLATHAN®/Vulkollan rollers with bearing Pu St L

## Tyre

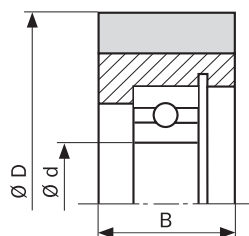
Polyurethane elastomer,  
ca. 93 Shore A

## Properties

- high load bearing capacity
- extremely abrasion resistant
- elastic damping
- silent running
- no chalking

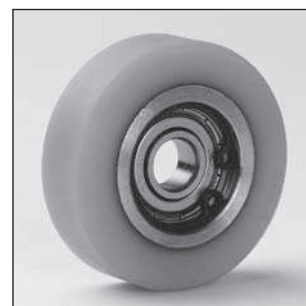
## Nominal size of article

(diagrammatic sketch)



## Remarks

- <sup>1)</sup> I.D. can be modified by using bushes
- <sup>2)</sup> in kg at 0,6 m/s straight running. Max. load for ball bearings as per manufacturer
- <sup>3)</sup> other bearings as per DIN on request
- <sup>4)</sup> rollers with retaining ring may have a crowned tread



D	d <sup>1)</sup>	B	Description	Load <sup>2)</sup>	Bearing <sup>3), 4)</sup>	Art. No.
25	5	15	25/5 x 15	40	2 x 625-ZZ	142 905.01
28	6	3/5	28/6 x 3/5	10	696-ZZ	140 594
29,75	8	12	29,75/8 x 12	40	608-ZZ	141 465.03
36	12	12	36/12 x 12	crowned R 60	6001-ZZ	140 987
40	10	15	40/10 x 15	crowned R 80	6000-2RS	142 293.03
40	10	15	40/10 x 15	70	6000-2RS	140 412.02
40	10	15	40/10 x 15	70	6000-ZZ	140 412
40	10	20	40/10 x 20	90	6000-ZZ	142 205
40	10	25	40/10 x 25	115	6000-ZZ	141 494.02
40	10	30	40/10 x 30	135	6000-ZZ	143 037
45	15	15	45/15 x 15	80	6202-2RS, rust-proof	141 819
46	9	15	46/9 x 15	80	629-ZZ	142 876
48	12	15	48/12 x 15	80	6201-ZZ	140 598.01
50	10	15	50/10 x 15	85	6000-2RS	140 413.04
50	10	15	50/10 x 15	85	6000-ZZ	140 413
50	12	20	50/12 x 20	110	6201-2RS	141 879
50	12	25	50/12 x 25	140	6201-ZZ	142 669
50	12	30	50/12 x 30	170	2 x 6201-2RS/FAG	143 047.01
50	15	18	50/15 x 18	100	6202-ZZ	140 414.12
50	15	19	50/15 x 19	105	6002-2RS	142 404
50	17	18	50/17 x 18	100	6003-ZZ	140 414
50	17	18	50/17 x 18	crowned R 80	6003-ZZ	142 062.01
50	17	18	50/17 x 18	100	6003-2RS	140 414.08
55	12	20	55/12 x 20	crowned R 55	6201-2RS	140 564
59	25	15	59/25 x 15	crowned R 29,5	6005-2RS	141 192

Dimensions in mm. Further dimensions, other PU-qualities, other hardnesses Shore A and special executions on request.

**Tyre**

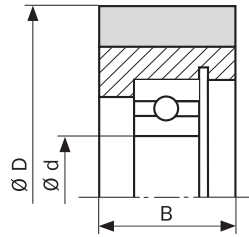
Polyurethane elastomer, ca. 93 Shore A

**Properties**

- high load bearing capacity
- extremely abrasion resistant
- elastic damping
- silent running
- no chalking

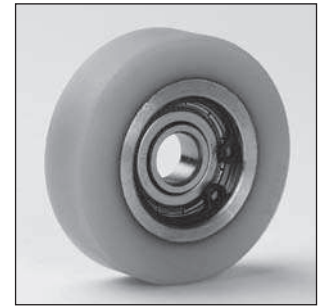
**Nominal size of article**

(diagrammatic sketch)



**Remarks**

- <sup>1)</sup> I.D. can be modified by using bushes
- <sup>2)</sup> in kg at 0,6 m/s straight running. Max. load for ball bearings as per manufacturer
- <sup>3)</sup> other bearings as per DIN on request
- <sup>4)</sup> rollers with retaining ring may have a crowned tread



D	d <sup>1)</sup>	B	Description	Load <sup>2)</sup>	Bearing <sup>3), 4)</sup>	Art. No.	
60	10	15	60/10 x 15	100	6200-ZZ	141 458	
60	15	18	60/15 x 18	120	6202-ZZ	140 415.04	
60	17	18	60/17 x 18	120	6003-2RS	140 415.08	
60	17	18	60/17 x 18	120	6003-ZZ	140 415	
60	17	18	60/17 x 18	crowned R 80	95	6003-ZZ	142 064.04
60	20	20	60/20 x 20	135	6004-ZZ	140 416	
60	20	20	60/20 x 20	135	6004-2RS	140 416.02	
61	15	35	61/15 x 35	235	3202A-ZZ	141 802.03	
62	25	29	62/25 x 29	200	6005-2RS	143 022	
70	17	18	70/17 x 18	crowned R 80	110	6003-ZZ	142 065.02
70	17	20	70/17 x 20	150	6203-ZZ	142 872.02	
70	17	26	70/17 x 26	200	3203A-ZZ	141 801.02	
70	20	15	70/20 x 15	115	6004-ZZ	140 582	
70	20	20	70/20 x 20	150	6004-ZZ	140 417	
70	20	20	70/20 x 20	150	6004-2RS	140 417.03	
70	20	25	70/20 x 25	200	6304-2RS	140 418.02	
70	25	25	70/25 x 25	200	6205-ZZ	140 418	
70	25	25	70/25 x 25	200	6205-2RS	140 418.04	
75	17	20	75/17 x 20	160	6203-2RS	140 653	
75	20	24	75/20 x 24	195	6204-2RS	141 715	
76,2	25	30	76,2/25 x 30	250	6205-2RS	141 068	
80	12	20	80/12 x 20	165	6201-ZZ	141 497	
80	20	20	80/20 x 20	175	6304-ZZ	142 437	
80	20	20	80/20 x 20	175	6204-ZZ	140 419.07	
80	20	22	80/20 x 22	zinc coated	190	6004-ZZ	142 475.01
80	20	25	80/20 x 25	crowned R 200	175	6304-ZZ	141 867.04
80	20	25	80/20 x 25		220	6304-2RS	140 420.03
80	25	20	80/25 x 20	175	6205-ZZ	140 419	
80	25	20	80/25 x 20	175	6205-2RS	140 419.02	
80	25	25	80/25 x 25	220	6205-ZZ	140 420	
80	25	25	80/25 x 25	220	6205-2RS	140 420.04	
80	25	25	80/25 x 25	crowned R 200	175	6205-ZZ	141 867
80	30	20	80/30 x 20	crowned R 200	140	6006-2RS	140 419.04
90	25	20	90/25 x 20	190	6205-ZZ	140 421	
90	25	20	90/25 x 20	190	6205-2RS	140 421.02	
90	25	25	90/25 x 25	240	6205-ZZ	140 422	

Dimensions in mm. Further dimensions, other PU-qualities, other hardnesses Shore A and special executions on request.

**Tyre**

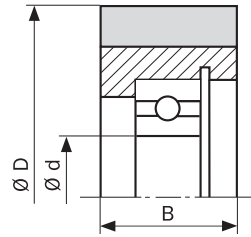
Polyurethane elastomer, ca. 93 Shore A

**Properties**

- high load bearing capacity
- extremely abrasion resistant
- elastic damping
- silent running
- no chalking

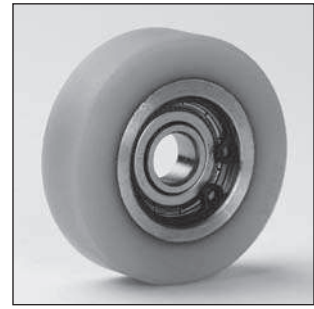
**Nominal size of article**

(diagrammatic sketch)



**Remarks**

- <sup>1)</sup> I.D. can be modified by using bushes
- <sup>2)</sup> in kg at 0,6 m/s straight running. Max. load for ball bearings as per manufacturer
- <sup>3)</sup> other bearings as per DIN on request
- <sup>4)</sup> rollers with retaining ring may have a crowned tread



D	d <sup>1)</sup>	B	Description	Load <sup>2)</sup>	Bearing <sup>3), 4)</sup>	Art. No.
100	20	20	100/20 x 20	205	6304-ZZ	140 423.02
100	20	25	100/20 x 25	255	6304-2RS	140 424.03
100	20	28	100/20 x 28	300	6304-2RS	141 671
100	25	20	100/25 x 20	205	6205-ZZ	140 423
100	25	25	100/25 x 25	255	6205-ZZ	140 424
100	25	25	100/25 x 25	crowned R 200	6205-ZZ	141 863.09
100	20	30	100/20 x 30	crowned R 200	6304-ZZ	142 787
100	25	25/31	100/25 x 25/31	crowned R 200	6005-2RS	141 863.08
100	25	30	100/25 x 30	crowned R 200	6205-2RS	141 915.02
110	25	20	110/25 x 20	215	6005-ZZ	140 767
110	25	20	110/25 x 20	220	6205-ZZ	140 768
110	25	25	110/25 x 25	275	6205-ZZ	140 769
110	25	30	110/25 x 30	330	6205-ZZ	140 770
120	20	25	120/20 x 25	290	6304-ZZ	140 772.02
120	25	20	120/25 x 20	230	6205-ZZ	140 771
120	25	25	120/25 x 25	290	6205-ZZ	140 772
120	25	30	120/25 x 30	crowned R 200	6205-2RS	140 773.06
120	25	30	120/25 x 30	345	6205-ZZ	140 773
120	30	30	120/30 x 30	380	6206-ZZ	142 060
125	17	30	125/17 x 30	410	6303-ZZ	140 856.04
125	20	30	125/20 x 30	410	6204-2RS	140 856
125	20	30	125/20 x 30	crowned R 200	6204-2RS	140 856.08
125	25	20	125/25 x 20	235	6205-ZZ	140 774
125	25	25	125/25 x 25	295	6205-ZZ	140 775
125	25	25	125/25 x 25	crowned R 200	6205-ZZ	141 868.03
125	25	25/31	125/25 x 25/31	crowned R 200	6005-2RS	141 868.02
125	25	30	125/25 x 30	crowned R 200	6005-2RS	140 776.06
125	25	30	125/25 x 30	350	6205-ZZ	140 776
179	25	35	179/25 x 35	crowned R 200	2 x 6005-2RS	142 416

**Dimensions in mm. Further dimensions, other PU-qualities, other hardnesses Shore A and special executions on request.**

Dimensions in mm. We reserve the right to change sizes. Further dimensions and special types on request.

Our verbal or written recommendations for any application as well as tests are carried out to the best of our knowledge. They are without engagement also as far as patent rights of third parties are concerned, and do not exempt you from checking the products sup-

plied by us to their suitability for the intended procedure and purpose.

Application, use and processing of the products are outside our control, and are exclusively the responsibility of the customer. Moreover our general sales conditions apply.

# ACLATHAN®/Vulkollan rollers with bearing seat Pu St Ls

**Tyre**

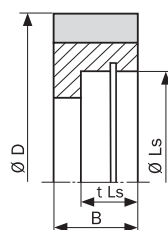
Polyurethane elastomer,  
ca. 93 Shore A

**Properties**

- high load bearing capacity
- extremely abrasion resistant
- elastic damping
- silent running
- no chalking

**Nominal size of article**

(diagrammatic sketch)


**Remarks**

<sup>1)</sup> in kg at 0,6 m/s  
straight running

**Hints**

Steel hub for retaining ring  
(see table „X“)



D	B	Description	Bearing seat	Groove for retaining ring	Load <sup>1)</sup>	Art. No.
29,75	12	29,75 x 12	22 x 9,5		40	141.465.01
40	15	40 x 15	26 x 11	X	70	140.412.01
40	18	40 x 18 (Alu hub)	28 x 13		80	141.618
40	20	40 x 20	26 x 14	X	90	142.225.01
50	15	50 x 15	26 x 11,5	X	85	140.413.01
50	18	50 x 18	35 x 14	X	100	140.414.01
50	20	50 x 20	32 x 15	X	110	141.879.01
60	18	60 x 18, zinc coated	35 x 14		120	142.113
60	18	60 x 18	35 x 14	X	120	140.415.01
60	20	60 x 20	42 x 16	X	135	140.416.01
61	35	61 x 35	35 x 25,5	X	235	141.802.02
70	15	70 x 15	42 x 13,5		115	140.582.01
70	20	70 x 20	42 x 16	X	150	140.417.01
70	25	70 x 25	52 x 20	X	200	140.418.01
70	26	70 x 26	40 x 21,7	X	200	141.801.01
75	20	75 x 20	40 x 16	X	160	140.653.01
75	24	75 x 24	47 x 19	X	195	141.715.02
80	20	80 x 20	52 x 17,5	X	175	140.419.01
80	22	80 x 22, zinc coated	42 x 19	X	190	142.475
80	25	80 x 25	52 x 20	X	220	140.420.01

Dimensions in mm. Further dimensions, other PU-qualities, other hardnesses Shore A and special executions on request.

**Tyre**

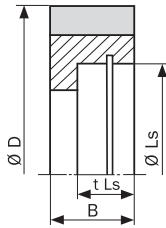
Polyurethane elastomer, ca. 93 Shore A

**Properties**

- high load bearing capacity
- extremely abrasion resistant
- elastic damping
- silent running
- no chalking

**Nominal size of article**

(diagrammatic sketch)



**Remarks**

<sup>1)</sup> in kg at 0,6 m/s straight running

**Hints**

Steel hub for retaining ring (see table „X“)



D	B	Description	Bearing seat	Groove for retaining ring	Load <sup>1)</sup>	Art. No.
90	20	90 x 20	52 x 17,5	X	190	140 421.01
90	25	90 x 25	52 x 20	X	240	140 422.01
100	20	100 x 20	52 x 17,5	X	205	140 423.01
100	25	100 x 25	52 x 20	X	255	140 424.01
110	20	110 x 20	47 x 16	X	215	140 767.01
110	20	110 x 20	52 x 17,5	X	220	140 768.01
110	25	110 x 25	52 x 20	X	275	140 769.01
110	30	110 x 30	52 x 22,5	X	330	140 770.01
120	20	120 x 20	52 x 17,5	X	230	140 771.01
120	25	120 x 25	52 x 20	X	290	140 772.01
120	30	120 x 30	52 x 22,5	X	345	140 773.01
120	30	120 x 30	62 x 23	X	380	142 060.01
120	35	120 x 35	52 x 25	X	450	142 201
125	20	125 x 20	52 x 17,5	X	235	140 774.01
125	25	125 x 25	52 x 20	X	295	140 775.01
125	30	125 x 30	52 x 22,5	X	340	140 776.01

**Dimensions in mm. Further dimensions, other PU-qualities, other hardnesses Shore A and special executions on request.**

Dimensions in mm. We reserve the right to change sizes. Further dimensions and special types on request.

Our verbal or written recommendations for any application as well as tests are carried out to the best of our knowledge. They are without engagement also as far as patent rights of third parties are concerned, and do not exempt you from checking the products sup-

plied by us to their suitability for the intended procedure and purpose.

Application, use and processing of the products are outside our control, and are exclusively the responsibility of the customer. Moreover our general sales conditions apply.

# ACLATHAN®/Vulkollan® rollers with bearing Pu G 2L/Pu St 2L/Pu Al 2L

**Tyre**

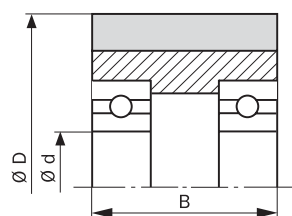
Polyurethane elastomer,  
ca. 93 Shore A

**Properties**

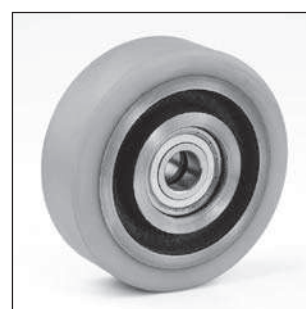
- high load bearing capacity
- extremely abrasion resistant
- elastic damping
- silent running
- no chalking

**Nominal size of article**

(diagrammatic sketch)


**Remarks**

- <sup>1)</sup> Pu G 2L = **cast iron**  
Pu St 2L = **steel**  
Pu Al 2L = **aluminium**
- <sup>2)</sup> in kg at 6 km/h straight running. Max. load for ball bearings as per manufacturer other bearings (e.g. 2RS or ZV on request
- <sup>3)</sup>



D	d	B	Description	Execution <sup>1)</sup>	Load <sup>2)</sup>	Bearing <sup>3)</sup>	Art. No.
25	5	15	25/5 x 15	Pu St 2L	36	625-ZZ	142905.01
45	12	25	45/12 x 25	Pu St 2L	105	6001-2RS	142592
60	25	30	60/25 x 30	Pu St 2L	170	6005-ZZ	143090
63	12	50	63/12 x 50	Pu St 2L	285	6201-ZZ	143171
70	25	35	70/25 x 35	Pu St 2L	230	6005-2RS	140551.03
70	20	60/35	70/20 x 60/35	Pu St 2L	400	6204-ZZ	141654
75	30	35	75/30 x 35	Pu St 2L, crowned R 200	200	6006-2RS	142540
80	25	40	80/25 x 40	Pu St 2L	290	6005-ZZ	140409.01
82	17	34	82/17 x 34	Pu St 2L	245	6203-ZZ	140711
82	20	66/71	82/22 x 66/71	Pu St 2L	500	6204-ZZV	141873.01
82	20	70	82/20 x 70	Pu St 2L	525	6204-ZZ	141493.02
82	20	72/74	82/20 x 72/74	Pu St 2L	540	6204-ZZV	141905.02
82	20	75	82/20 x 75	Pu St 2L	565	6204-ZZ	143052
82	20	78/80	82/20 x 78/80	Pu St 2L	570	6204-ZZV	140432
82	20	91/96	82/20 x 91/96	Pu St 2L	685	6204-ZZV	142227.01
82	20	98/102	82/20 x 98/102	Pu St 2L	715	6204-ZZV	140528.03
82	20	100	82/20 x 100	Pu St 2L	750	6204-ZZ	141087.02
82	20	100/103,5	82/20 x 100/103,5	Pu St 2L	750	6204-ZZV	141087.04
85	20	60	85/20 x 60	Pu St 2L	450	6204-ZZ	141128
85	20	75	85/20 x 75	Pu St 2L	580	6204-RS	140741.01
85	20	78	85/20 x 78	Pu St 2L	610	6204-ZZ	140250.02
85	20	80	85/20 x 80	Pu St 2L	600	6204-ZZ	140457.02
85	17	86,5	85/17 x 86,5	Pu St 2L	670	6203-ZZ	140302.12
85	20	90/94	85/20 x 90/94	Pu St 2L	700	6204-ZZV	141496.04
85	25	120/124	85/25 x 120/124	Pu St 2L	900	6005-ZZV	140747
90	25	38	90/25 x 38	Pu St 2L	320	6005-2RS	142542.01
90	12	88/92	90/12 x 88/92	Pu St 2L	710	6006-2RS	143196
90	30	91	90/30 x 91	Pu St 2L	750	4 x 6006-2RS	142901
90	12	91/92	90/12 x 91/92	Pu St 2L	750	4 x 6006-2RS	143197
90	12	100/102	90/12 x 100/102	Pu St 2L	810	4 x 6006-2RS	143015.01

Dimensions in mm. Further dimensions, other PU-qualities, other hardnesses Shore A and special executions on request.

**Tyre**

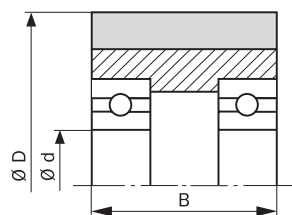
Polyurethane elastomer,  
ca. 93 Shore A

**Properties**

- high load bearing capacity
- extremely abrasion resistant
- elastic damping
- silent running
- no chalking

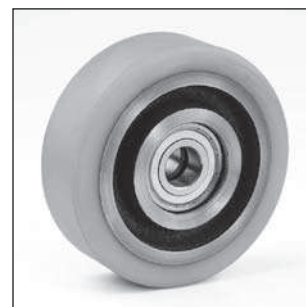
**Nominal size of article**

(diagrammatic sketch)



**Remarks**

- <sup>1)</sup> Pu G 2L = cast iron  
Pu St 2L = steel  
Pu Al 2L = aluminium
- <sup>2)</sup> in kg at 6 km/h straight running. Max. load for ball bearings as per manufacturer other bearings (e.g. 2RS or ZV on request
- <sup>3)</sup>



D	d	B	Description	Execution <sup>1)</sup>	Load <sup>2)</sup>	Bearing <sup>3)</sup>	Art. No.
100	15	40	100/15 x 40	Pu Al 2L	270	6002-ZZ	142010.01
100	25	38	100/25 x 38	Pu St 2L	320	6005-2RS	140656.04
100	20	40/45	100/20 x 40/45	Pu St 2L	370	6204-2RS	142138.02
100	20	50	100/20 x 50	Pu St 2L	420	6204-2RS	140319.03
100	25	50	100/25 x 50	Pu St 2L	420	6005-2RS	140319.02
100	25	50/54	100/25 x 50/54	Pu St 2L	500	6005-ZZV	141903.03
110	20	25	110/20 x 25	Pu Al 2L	250	6204-2RS	142792
110	20	50	110/20 x 50	Pu St 2L	495	6204-ZZ	141093.02
125	20	40	125/20 x 40	Pu G 2L	450	6204-ZZ	142653.01
125	25	40	125/25 x 40	Pu G 2L, crowned R 200	365	6205-2RS	142773.03
125	20	40/45	125/20 x 40/45	Pu G 2L	460	6204-2RS	141008.05
125	20	40/50	125/20 x 40/50	Pu G 2L	460	6204-ZZ	140861.09
125	25	40/50	125/25 x 40/50	Pu G 2L	460	6005-ZZ	140861.11
125	20	50/54	125/20 x 50/54	Pu G 2L	570	6204-2RS	141701.03
125	20	60/62	125/20 x 60/62	Pu G 2L, crowned R 181,25	540	6204-ZZV	143016.01
139,5	17	31,7/34,9	139,5/17 x 31,7/34,9	Pu Al 2L	410	6203-ZZ	142562
140	20	28/30	140/20 x 28/30	Pu G 2L	365	6304-ZZ	141991
140	25	28/30	140/25 x 28/30	Pu G 2L	365	6205-ZZ	141991.02
140	20	54/60	140/20 x 54/60	Pu Al 2L, crowned R 100	525	6204-2RS	142710.05
140	12	60/65	140/12 x 60/65	Pu G 2L, crowned R 140	600	6205-ZZ	140279.02
140	20	60/65	140/20 x 60/65	Pu G 2L, crowned R 140	600	6304-2RS	140279.03
140	20	60/68	140/20 x 60/68	Pu G 2L, crowned R 140	600	6304-ZZ	141596.01
140	15	60/75	140/15 x 60/75	Pu G 2L, crowned R 140	470	6006-ZZ	142473.02
140	20	60/75	140/20 x 60/75	Pu G 2L, crowned R 140	470	6006-ZZ	142473.03
148	25	38/40	148/25 x 38/40	Pu G 2L, crowned R 200	395	6205-2RS	141955.05
150	25	30/35	150/25 x 30/35	Pu G 2L	315	6005-2RS	142871.01
150	25	38/40	150/25 x 38/40	Pu G 2L	495	6005-ZZ	141955
150	20	40	150/20 x 40	Pu G 2L, crowned R 130	420	6204-ZZ	140616.01
150	20	40/50	150/20 x 40/50	Pu G 2L	520	6204-ZZ	141091
150	25	50/51	150/25 x 50/51	Pu G 2L	650	6005-2RS	141236.01
150	20	50/60	150/20 x 50/60	Pu G 2L	660	6304-ZZ	141869.04
150	12	50/65	150/12 x 50/65	Pu G 2L	660	6006-2RS	141869.05
150	25	52	150/25 x 52	Pu G 2L	670	6205-ZZ	140494.02
150	20	52	150/20 x 52	Pu G 2L	670	6304-2RS	140494.03
150	30	52	150/30 x 52	Pu G 2L	670	6006-2RS	140494.01
150	20	54/60	150/20 x 54/60	Pu Al 2L, crowned R 100	545	6204-2RS	142664.04
150	20	55/60	150/20 x 55/60	Pu G 2L, crowned R 130	585	6204-ZZ	140610.06
160	30	50	160/30 x 50	Pu G 2L, crowned R 300	560	6206-2RS/SKF	142394.04
160	30	50/43	160/30 x 50/43	Pu G 2L	735	6006-2RS	140912.02
160	20	50/58	160/20 x 50/58	Pu G 2L	735	6006-2RS	140834.01
160	30	50/55	160/30 x 50/55	Pu G 2L	735	6006-2RS	140834.02
160	20	50/60	160/20 x 50/60	Pu Al 2L	440	6204-ZZ	142543.03
160	25	50/60	160/25 x 50/60	Pu Al 2L	440	6005-ZZ	142543.04

Dimensions in mm. Further dimensions, other PU-qualities, other hardnesses Shore A and special executions on request.



**Tyre**

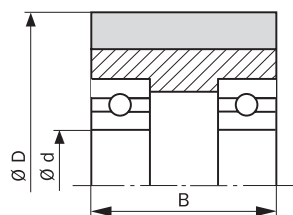
Polyurethane elastomer, ca. 93 Shore A

**Properties**

- high load bearing capacity
- extremely abrasion resistant
- elastic damping
- silent running
- no chalking

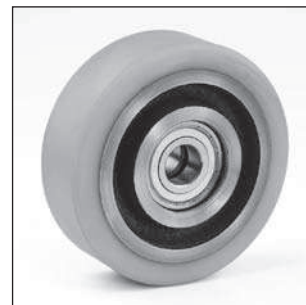
**Nominal size of article**

(diagrammatic sketch)



**Remarks**

- <sup>1)</sup> Pu G 2L = **cast iron**  
Pu St 2L = **steel**  
Pu Al 2L = **aluminium**
- <sup>2)</sup> in kg at 6 km/h straight running. Max. load for ball bearings as per manufacturer
- <sup>3)</sup> other bearings (e.g. 2RS or ZV on request



D	d	B	Description	Execution <sup>1)</sup>	Load <sup>2)</sup>	Bearing <sup>3)</sup>	Art. No.
175	20	50/58,5	175/20 x 50/58,5	Pu Al 2L, crowned R 100	460	6204-ZZ	142 951.01
179	25	35	179/25 x 35	Pu G 2L, crowned R 200	445	6005-2RS	142 416
180	25	40	180/25 x 40	Pu G 2L	620	6205-ZZ	142 209.02
180	20	50/60	180/20 x 50/60	Pu Al 2L, crowned R 100	580	6204-ZZ	142 544.03
180	25	52/60	180/25 x 52/60	Pu G 2L, crowned R 100	640	6005-ZZ	141 012.01
180	25	65/75	180/25 x 65/75	Pu Al 2L, crowned R 200	790	6305-2RS	142 275.07
200	25	40	200/25 x 40	Pu G 2L, crowned R 200	575	6205-2RS	142 417.04
200	20	50/56	200/20 x 50/56	Pu G 2L	915	6304-ZZ	140 614.02
200	25	50/56	200/25 x 50/56	Pu G 2L	915	6205-ZZ	140 614.03
200	20	51/60	200/20 x 51/60	Pu Al 2L	690	6204-ZZ	142 545.03
200	25	51/60	200/25 x 51/60	Pu Al 2L	690	6005-ZZ	142 545.07
200	25	51/60	200/25 x 51/60	Pu Al 2L	915	6005-ZZ	141 540
200	20	52/60	200/20 x 52/60	Pu G 2L	920	6304-2RS	140 400.05
200	25	52/60	200/25 x 52/60	Pu G 2L	920	6205-2RS	140 400.02
200	30	52/60	200/30 x 52/60	Pu G 2L	920	6006-2RS	140 400.04
200	20	57	200/20 x 57	Pu G 2L, crowned R 140	795	6204-2RS	141 166.01
200	45	80	200/45 x 80	Pu G 2L	1.390	6009-2RS1	141 603.03
200	30	82	200/30 x 82	Pu G 2L, crowned R 250	1.150	6206-2RS	141 020.01
230	30	54	230/30 x 54	Pu G 2L	1.080	6006-2RS	141 254
240	35	70	240/35 x 70	Pu G 2L, crowned R 500	1.135	6207-2RS/SKF	143 295.02
250	25	50/55	250/25 x 50/55	Pu St 2L	1.100	6205-2RS	142 812
250	40	80	250/40 x 80	Pu G 2L	1.740	6208-2RS/SKF	141 842.03
250	40	80	250/40 x 80	Pu St 2L	1.770	6008-2RS	140 992
250	50	80	250/50 x 80	Pu St 2L	1.770	6210-2RS1	142 159.07
285	40	100/75	285/40 x 100/75	Pu G 1L	2.425	Tapered roller bearing	142 461.04
285	40	100/77,5	285/40 x 100/77,5	Pu G 1L (6 mounting holes)	2.425	Tapered roller bearing	143 289.01
300	50	100	300/50 x 100	Pu G 2L	2.500	6210-ZZ	142 375.02

**Dimensions in mm. Further dimensions, other PU-qualities, other hardnesses Shore A and special executions on request.**

Dimensions in mm. We reserve the right to change sizes. Further dimensions and special types on request.

Our verbal or written recommendations for any application as well as tests are carried out to the best of our knowledge. They are without engagement also as far as patent rights of third parties are concerned, and do not exempt you from checking the products sup-

plied by us to their suitability for the intended procedure and purpose.

Application, use and processing of the products are outside our control, and are exclusively the responsibility of the customer. Moreover our general sales conditions apply.



# ACLATHAN®/Vulkollan® rollers with bearing seat Pu G 2Ls/Pu St 2Ls/Pu Al 2Ls

### Tyre

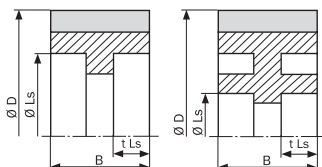
Polyurethane elastomer,  
ca. 93 Shore A

### Properties

- high load bearing capacity
- extremely abrasion resistant
- elastic damping
- silent running
- no chalking

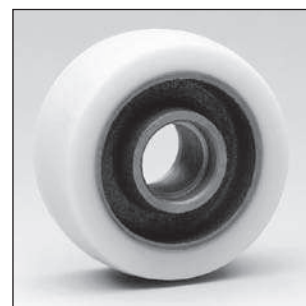
### Nominal size of article

(diagrammatic sketch)



### Remarks

- <sup>1)</sup> in kg at 6 km/h straight running.
- <sup>2)</sup> Bearing seat tolerances N7, M7 or as per order. All listed rollers can be completed with ball bearings as per DIN standard on request.



D	B	Description	Execution	Load <sup>1)</sup>	Bearing seat <sup>2)</sup>	Art. No.
32	38	32 x 38	Pu St 2Ls	120	22 x 9,4	142 852.01
50	41	50 x 41	Pu Al 2Ls	190	26 x 8	142 247.01
50	41	50 x 41	Pu St 2Ls	190	26 x 8	142 247.02
50	55	50 x 55	Pu St 2Ls	260	35 x 11	141 454
50	60	50 x 60	Pu St 2Ls	280	32 x 12	140 672
50	70	50 x 70	Pu St 2Ls	330	30 x 9	140 388
52	25	52 x 25	Pu St 2Ls	120	35 x 9,9/13,5	141 484
52	70	52 x 70	Pu St 2Ls	340	32 x 18	141 704
56	45	56 x 45	Pu St 2Ls	240	40 x 12	142 063
63	45	63 x 45	Pu St 2Ls	260	40 x 12	140 502
65	75	65 x 75	Pu St 2Ls	450	37 x 16	140 688
65	75/69	65 x 75/69	Pu St 2Ls	450	42 x 20	141 710
65	100	65 x 100	Pu St 2Ls	600	37 x 16	140 979
65	130	65 x 130	Pu St 2Ls	780	37 x 16	140 980
65	170	65 x 170	Pu St 2Ls	1.020	37 x 16	140 981
70	35	70 x 35	Pu St 2Ls	230	47 x 14	140 551
70	75	70 x 75	Pu St 2Ls	500	47 x 32	140 238
70	80	70 x 80	Pu St 2Ls	520	47 x 15	140 658
75	45	75 x 45	Pu St 2Ls	300	40 x 12	140 292
75	60	75 x 60	Pu St 2Ls	410	47 x 20	140 962
75	62	75 x 62	Pu St 2Ls	420	47 x 14	140 351
75	70	75 x 70	Pu St 2Ls	490	47 x 14	140 252
75	75	75 x 75	Pu St 2Ls	510	47 x 14	140 461
75	95	75 x 90	Pu St 2Ls	650	47 x 14	140 358
75	200	75 x 200	Pu St 2Ls	1.370	47 x 14	141 181
78	78	78 x 78	Pu St 2Ls	570	47 x 16	140 342

Dimensions in mm. Further dimensions, other PU-qualities, other hardnesses Shore A and special executions on request.

**Tyre**

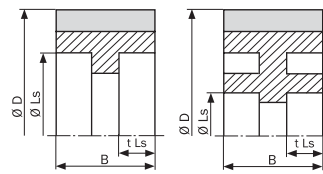
Polyurethane elastomer, ca. 93 Shore A

**Properties**

- high load bearing capacity
- extremely abrasion resistant
- elastic damping
- silent running
- no chalking

**Nominal size of article**

(diagrammatic sketch)



**Remarks**

- <sup>1)</sup> in kg at 6 km/h straight running.
- <sup>2)</sup> Bearing seat tolerances N7, M7 or as per order. All listed rollers can be completed with ball bearings as per DIN standard on request.



D	B	Description	Execution	Load <sup>1)</sup>	Bearing seat <sup>2)</sup>	Art. No.
80	27	80 x 27	Pu St 2Ls	195	47 x 12	140408
80	30	80 x 30	Pu Al 2Ls	215	32 x 10	142250.01
80	30	80 x 30	Pu Al 2Ls, crowned R 25	175	32 x 10	142263.01
80	30	80 x 30	Pu St 2Ls	225	32 x 11,7	140739
80	35	80 x 35	Pu St 2Ls	250	47 x 15	141163
80	40	80 x 40	Pu Al 2Ls, crowned R 36	230	32 x 10	142252.01
80	40	80 x 40	Pu St 2Ls	290	47 x 12	140409
80	50	80 x 50	Pu St 2Ls	360	47 x 17	140947
80	50	80 x 50	Pu St 2Ls	360	52 x 15	140967
80	54	80 x 54	Pu St 2Ls	380	47 x 12	140338
80	54	80 x 54	Pu St 2Ls	380	47 x 14	140535
80	55	80 x 55	Pu St 2Ls	390	47 x 16,2	140506
80	56	80 x 56	Pu St 2Ls	410	47 x 14,5	141550
80	60	80 x 60	Pu St 2Ls	440	52 x 15	140631
80	63	80 x 63	Pu St 2Ls	450	47 x 13	140396
80	70	80 x 70	Pu St 2Ls	500	47 x 14	141640
80	70	80 x 70	Pu St 2Ls	500	47 x 19	141285
80	75	80 x 75	Pu St 2Ls	540	47 x 13	140965
80	75	80 x 75	Pu St 2Ls	540	47 x 20	140972
80	80	80 x 80	Pu St 2Ls	570	47 x 14	141641
80	80	80 x 80	Pu St 2Ls	585	52 x 19	141734
80	93	80 x 93	Pu St 2Ls	625	47 x 15	140465
82	30	82 x 30	Pu St 2Ls	220	32 x 14,5	140948
82	34	82 x 34	Pu St 2Ls	255	32 x 11,1	141123
82	36	82 x 36	Pu St 2Ls	270	40 x 12	141049
82	50	82 x 50	Pu St 2Ls	365	47 x 17	140255
82	50	82 x 50	Pu St 2Ls	375	52 x 18	140533
82	55	82 x 55	Pu St 2Ls	395	40 x 21,5	140280
82	60	82 x 60	Pu St 2Ls	430	40 x 21,5	140256
82	60	82 x 60	Pu St 2Ls	450	52 x 19	140257
82	62	82 x 62	Pu St 2Ls	460	47 x 14	142897
82	65	82 x 65	Pu St 2Ls	475	47 x 23	141904
82	66	82 x 66	Pu St 2Ls	500	47 x 12,5	141873
82	70	82 x 70	Pu St 2Ls	525	47 x 12	141089
82	70	82 x 70	Pu St 2Ls	525	47 x 14	141493
82	70	82 x 70	Pu St 2Ls	525	47 x 16	141088
82	72	82 x 72	Pu St 2Ls	540	47 x 14	141905.01
82	76	82 x 76	Pu St 2Ls	565	52 x 18	140651
82	78	82 x 78	Pu St 2Ls	570	47 x 15	140427
82	80	82 x 80	Pu St 2Ls	600	42 x 25,5	140281
82	80	82 x 80	Pu St 2Ls	600	52 x 21	141246
82	82,6	82 x 82,6	Pu St 2Ls	620	52 x 15,1	141030
82	91	82 x 91	Pu St 2Ls	685	47 x 12,5	142227
82	95	82 x 95	Pu St 2Ls	715	47 x 20	140963
82	98	82 x 98	Pu St 2Ls	715	47 x 14	140528.01
82	98	82 x 98	Pu St 2Ls	715	47 x 20,5	141906
82	100	82 x 100	Pu St 2Ls	750	47 x 12	141090
82	100	82 x 100	Pu St 2Ls	750	47 x 16	141087
82	165,1	82 x 165,1	Pu St 2Ls	1.250	52 x 36,5	141031

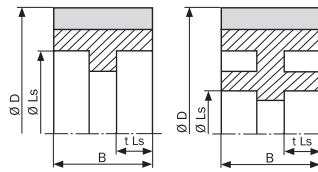
Dimensions in mm. Further dimensions, other PU-qualities, other hardnesses Shore A and special executions on request.

**Tyre**

Polyurethane elastomer,  
ca. 93 Shore A

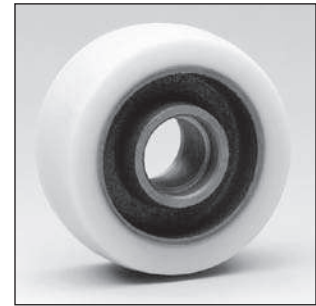
**Nominal size of article**

(diagrammatic sketch)



**Remarks**

- 1) in kg at 6 km/h straight running.
- 2) Bearing seat tolerances N7, M7 or as per order. All listed rollers can be completed with ball bearings as per DIN standard on request.



**Properties**

- high load bearing capacity
- extremely abrasion resistant
- elastic damping
- silent running
- no chalking

D	B	Description	Execution	Load <sup>1)</sup>	Bearing seat <sup>2)</sup>	Art. No.
82,6	95,3	82,6 x 95,3	Pu St 2Ls	715	52, 20,6	141 221
82,6	101,6	82,6 x 101,6	Pu St 2Ls	760	52 x 18	141 048
82,6	106,4	82,6 x 106,4	Pu St 2Ls	800	52 x 15	141 947
82,6	114,3	82,6 x 114,3	Pu St 2Ls	885	62 x 16,7	142 035
82,6	127	82,6 x 127	Pu St 2Ls	960	52 x 15	142 078
82,6	150,1	82,6 x 150,1	Pu St 2Ls	1.140	52 x 30	141 812
82,6	152	82,6 x 152	Pu St 2Ls	1.140	50,25 x 13,7	141 583
82,6	161,9	82,6 x 161,9	Pu St 2Ls	1.215	52 x 20,6	141 223
83	51	83 x 51	Pu St 2Ls	380	52 x 15	141 105
83	51	83 x 51	Pu St 2Ls	380	52 x 17	140 313
83	70	83 x 70	Pu St 2Ls	515	47 x 17	140 316
83	75/69	83 x 75/69	Pu St 2Ls	540	42 x 20	140 260
83	100	83 x 100	Pu St 2Ls	725	42 x 23	140 237
83	100	83 x 100	Pu St 2Ls	725	47 x 17	140 287
83,5	61	83,5 x 61	Pu St 2Ls	450	47 x 12	141 451
84	60	84 x 60	Pu St 2Ls	445	47 x 12	141 512
84	75	84 x 75	Pu St 2Ls, crowned R 400	460	42 x 23,5	140 214
85	40	85 x 40	Pu St 2Ls	310	52 x 15	141 112
85	45	85 x 45	Pu St 2Ls	340	47 x 14	141 527
85	45	85 x 45	Pu St 2Ls	340	52 x 15	141 573
85	50	85 x 50	Pu St 2Ls	385	52 x 15	140 521
85	50	85 x 50	Pu St 2Ls	385	52 x 18	140 311
85	53	85 x 53	Pu St 2Ls	400	42 x 12	141 069
85	55	85 x 55	Pu St 2Ls	410	40 x 21,5	140 964
85	59,5	85 x 59,9	Pu St 2Ls	455	40 x 21	141 063
85	60	85 x 60	Pu St 2Ls	450	47 x 12,5	140 601
85	60	85 x 60	Pu St 2Ls	450	47 x 14	141 194
85	60	85 x 60	Pu St 2Ls	450	47 x 20	140 345
85	60	85 x 60	Pu St 2Ls	450	52 x 20	141 691
85	61	85 x 61	Pu St 2Ls	460	47 x 17	140 206
85	65	85 x 65	Pu St 2Ls	485	47 x 15	141 719
85	70	85 x 70	Pu St 2Ls	535	47 x 14	141 639
85	70	85 x 70	Pu St 2Ls	535	47 x 18,2	141 695
85	70	85 x 70	Pu St 2Ls	535	47 x 32	140 578
85	70	85 x 70	Pu St 2Ls	535	52 x 20	140 343
85	70	85 x 70	Pu St 2Ls	535	52 x 23	140 247
85	72	85 x 72	Pu St 2Ls	550	47 x 21	140 639
85	73	85 x 73	Pu St 2Ls	555	47 x 24	141 079
85	75	85 x 75	Pu St 2Ls	580	42 x 14	141 720
85	75	85 x 75	Pu St 2Ls	580	42 x 23,5	140 609
85	75	85 x 75	Pu St 2Ls	580	47 x 13,5	140 251
85	75	85 x 75	Pu St 2Ls	580	47 x 14	140 741
85	75	85 x 75	Pu St 2Ls	580	47 x 15	140 262
85	75	85 x 75	Pu St 2Ls	580	47 x 20	140 335
85	75	85 x 75	Pu St 2Ls	580	47 x 32	140 200
85	78	85 x 78	Pu St 2Ls	600	47 x 14	140 250
85	78	85 x 78	Pu St 2Ls	600	47 x 20	140 246

Dimensions in mm. Further dimensions, other PU-qualities, other hardnesses Shore A and special executions on request.

**Tyre**

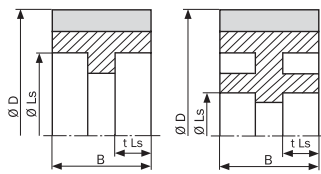
Polyurethane elastomer, ca. 93 Shore A

**Properties**

- high load bearing capacity
- extremely abrasion resistant
- elastic damping
- silent running
- no chalking

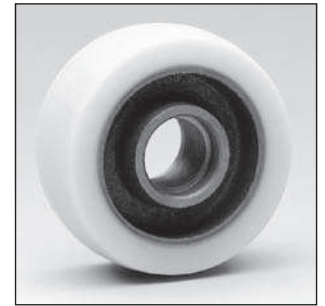
**Nominal size of article**

(diagrammatic sketch)



**Remarks**

- 1) in kg at 6 km/h straight running.
- 2) Bearing seat tolerances N7, M7 or as per order. All listed rollers can be completed with ball bearings as per DIN standard on request.



D	B	Description	Execution	Load <sup>1)</sup>	Bearing seat <sup>2)</sup>	Art. No.
85	80	85 x 80	Pu St 2Ls	600	47 x 14	140 457
85	80	85 x 80	Pu St 2Ls	600	47 x 20	140 332
85	80	85 x 80	Pu St 2Ls	600	47 x 32	140 201
85	80	85 x 80	Pu St 2Ls	600	52 x 15	140 500
85	80	85 x 80	Pu St 2Ls	600	52 x 18	140 312
85	80	85 x 80	Pu St 2Ls	600	52 x 19	140 263
85	80	85 x 80	Pu St 2Ls	600	52 x 21	141 287
85	80	85 x 80	Pu St 2Ls	600	52 x 34	140 832
85	86,5	85 x 86,5	Pu St 2Ls	670	40 x 21	140 302.04
85	86,5	85 x 86,5	Pu St 2Ls	670	47 x 14	140 302
85	90	85 x 90	Pu St 2Ls	700	47 x 14	141 496
85	90	85 x 90	Pu St 2Ls	690	47 x 17	140 507
85	90	85 x 90	Pu St 2Ls	690	52 x 18	140 207
85	95	85 x 95	Pu St 2Ls	740	47 x 14	140 297
85	95	85 x 95	Pu St 2Ls	740	47 x 15	141 130
85	95	85 x 95	Pu St 2Ls	740	47 x 20	140 333
85	95	85 x 95	Pu St 2Ls	740	47 x 22	141 705
85	95	85 x 95	Pu St 2Ls	740	47 x 30	140 863
85	95	85 x 95	Pu St 2Ls	740	47 x 32	140 202
85	95	85 x 95	Pu St 2Ls	740	52 x 34	140 673
85	98	85 x 98	Pu St 2Ls	750	47 x 13,5	140 955
85	100	85 x 100	Pu St 2Ls	765	40 x 21	140 209
85	100	85 x 100	Pu St 2Ls	765	42 x 24	141 080
85	100	85 x 100	Pu St 2Ls	765	47 x 13,5	140 234
85	100	85 x 100	Pu St 2Ls	765	47 x 15	141 588
85	100	85 x 100	Pu St 2Ls	765	47 x 16	140 344
85	100	85 x 100	Pu St 2Ls	765	47 x 17	140 526
85	100	85 x 100	Pu St 2Ls	765	47 x 19	140 605
85	100	85 x 100	Pu St 2Ls	765	47 x 20	140 667
85	100	85 x 100	Pu St 2Ls	765	47 x 30	140 864
85	100	85 x 100	Pu St 2Ls	765	47 x 32	140 300
85	100	85 x 100	Pu St 2Ls	765	52 x 23	140 956
85	105	85 x 105	Pu St 2Ls	805	52 x 21	141 394
85	110	85 x 110	Pu St 2Ls	840	47 x 14	140 740
85	110	85 x 110	Pu St 2Ls	840	47 x 20	140 334
85	110	85 x 110	Pu St 2Ls	840	47 x 32	140 203
86	115	86 x 115	Pu St 2Ls	915	62 x 15	143 155
88	50	88 x 50	Pu St 2Ls	405	42 x 15	143 009
90	38	90 x 38	Pu St 2Ls	300	47 x 12	142 542
90	85	90 x 85	Pu St 2Ls	680	52 x 17	140 210
90	88	90 x 88	Pu St 2Ls	710	55 x 31	143 115
90	100	90 x 100	Pu St 2Ls	810	55 x 32	143 015

Dimensions in mm. Further dimensions, other PU-qualities, other hardnesses Shore A and special executions on request.

**Tyre**

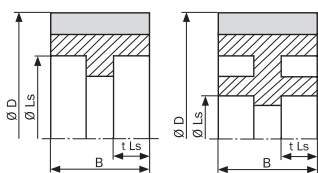
Polyurethane elastomer,  
ca. 93 Shore A

**Properties**

- high load bearing capacity
- extremely abrasion resistant
- elastic damping
- silent running
- no chalking

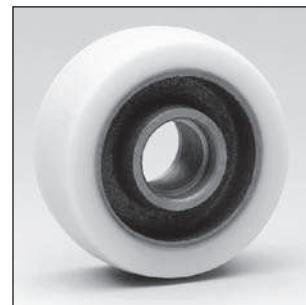
**Nominal size of article**

(diagrammatic sketch)



**Remarks**

- 1) in kg at 6 km/h straight running.
- 2) Bearing seat tolerances N7, M7 or as per order. All listed rollers can be completed with ball bearings as per DIN standard on request.



D	B	Description	Execution	Load <sup>1)</sup>	Bearing seat <sup>2)</sup>	Art. No.
100	38	100 x 38	Pu St 2Ls	320	47 x 14	140656
100	40	100 x 40	Pu G 2Ls, crowned R 80	270	32 x 9	142010.06
100	40	100 x 40	Pu Al 2Ls, crowned R 80	270	32 x 9	142010
100	40	100 x 40	Pu Al 2Ls, crowned R 36	280	32 x 10	142432
100	40	100 x 40	Pu Al 2Ls	350	32 x 10	142253.01
100	40/45	100 x 40/45	Pu St 2Ls	370	47 x 15	142138
100	44	100 x 44	Pu St 2Ls	390	28 x 7,5	140855
100	45	100 x 45	Pu St 2Ls	390	47 x 12	140737
100	45	100 x 45	Pu St 2Ls	390	47 x 14	141828
100	50	100 x 50	Pu St 2Ls	420	47 x 20	140319
100	50	100 x 50	Pu St 2Ls	420	47 x 22	141903
100	75	100 x 75	Pu St 2Ls	680	62 x 14/19	141533
100	100	100 x 100	Pu St 2Ls	905	62 x 16	140299
101,6	28,6	101,6 x 28,6	Pu Al 2Ls	260	39,7 x 11,1	141430
101,6	73,5	101,6 x 73,5	Pu St 2Ls	670	52 x 19,1	142001
107	56	107 x 56	Pu St 2Ls	500	52 x 20	140430
110	50	110 x 50	Pu St 2Ls	495	47 x 16	141093
110	50	110 x 50	Pu St 2Ls	500	52 x 15	142187
110	75	110 x 75	Pu St 2Ls	685	52 x 20	140363
110	80	110 x 80	Pu St 2Ls	785	62 x 13	141808
120	40/50	120 x 40/50	Pu G 2Ls	420	47 x 16	141177
120	50	120 x 50	Pu G 2Ls	530	47 x 16	141591
120	50	120 x 50	Pu G 2Ls	530	52 x 15	140330
125	40/45	125 x 40/45	Pu G 2Ls	460	47 x 14	141008
125	40/50	125 x 40/50	Pu G 2Ls	460	47 x 14	140861
125	45	125 x 45	Pu Al 2Ls	490	47 x 14	142255.01
125	45	125 x 45	Pu Al 2Ls, crowned R 36	395	47 x 14	142256.01
125	50	125 x 50	Pu G 2Ls	560	35 x 10	142525
125	50	125 x 50	Pu G 2Ls	570	47 x 12	141701
125	60	125 x 60	Pu G 2Ls, crowned R 181,25	540	47 x 14	143016
125	65	125 x 65	Pu St 2Ls	720	47 x 14	140975
125	150	125 x 150	Pu St 2Ls	1.660	52 x 18	140472.01
127	73,2	127 x 73,2	Pu G 2Ls	820	52 x 15	141015
127	92,2	127 x 92,2	Pu St 2Ls	1.050	61,9 x 16,9	141183
140	54/60	140 x 54/60	Pu G 2Ls, crowned R 200	530	47 x 14	142366.03
140	54/60	140 x 54/60	Pu Al 2Ls, crowned R 100	530	47 x 15	142710.03
140	60/68	140 x 60/68	Pu G 2Ls, crowned R 140	600	55 x 22	142473.03
140	60/68	140 x 60/68	Pu G 2Ls, crowned R 140	600	52 x 15	141596
140	60/68	140 x 60/68	Pu G 2Ls, crowned R 140	600	52 x 22	140279
148	38/40	148 x 38/40	Pu G 2Ls	495	52 x 17,5	141955.06

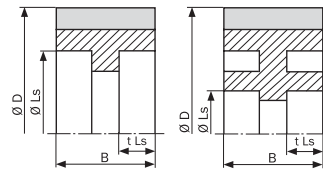
Dimensions in mm. Further dimensions, other PU-qualities, other hardnesses Shore A and special executions on request.

**Tyre**

Polyurethane elastomer, ca. 93 Shore A

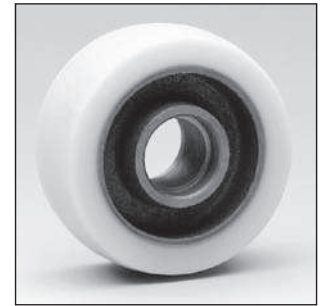
**Nominal size of article**

(diagrammatic sketch)



**Remarks**

- 1) in kg at 6 km/h straight running.
- 2) Bearing seat tolerances N7, M7 or as per order. All listed rollers can be completed with ball bearings as per DIN standard on request.



**Properties**

- high load bearing capacity
- extremely abrasion resistant
- elastic damping
- silent running
- no chalking

D	B	Description	Execution	Load <sup>1)</sup>	Bearing seat <sup>2)</sup>	Art. No.
150	40	150 x 40	Pu G 2Ls, crowned R 130	420	47 x 14	140616
150	40/50	150 x 40/50	Pu G 2Ls	520	47 x 19,5	140410
150	50	150 x 50	Pu Al 2Ls	640	47 x 14	142257.01
150	50	150 x 50	Pu Al 2Ls, crowned R 36	515	47 x 14	142258.01
150	50/51	150 x 50/51	Pu G 2Ls	650	47 x 14	141236
150	50/60	150 x 50/60	Pu G 2Ls	660	52 x 16	141869
150	52	150 x 52	Pu G 2Ls	670	52 x 15	140494
150	54/60	150 x 54/60	Pu Al 2Ls, crowned R 100	545	47 x 15	142664.01
150	55/60	150 x 55/60	Pu G 2Ls, crowned R 130	585	47 x 14	140610.02
150	55/60	150 x 55/60	Pu G 2Ls, crowned R 130	585	52 x 19	140610.10
150	120	150 x 120	Pu St 2Ls	1.600	75 x 23,5	140548
160	50/43	160 x 50/43	Pu G 2Ls	735	55 x 14,85	140912
160	50/55	160 x 50/55	Pu G 2Ls	735	55 x 20,85	140834
160	50/60	160 x 50/60	Pu Al 2Ls	735	47 x 16	142543
160	50/60	160 x 50/60	Pu G 2Ls	735	52 x 22	141754
180	40	180 x 40	Pu G 2Ls	620	52 x 15	142209
180	50/56	180 x 50/56	Pu G 2Ls, crowned R 100	500	52 x 17	141051
180	50	180 x 50	Pu Al 2 Ls, crowned R 36	620	47 x 14	142260.01
180	50	180 x 50	Pu G 2Ls	540	52 x 14,5	142184.N
180	50/58,5	180 x 50/58,5	Pu Al 2Ls, crowned R 100	580	47 x 16	142544
180	52/60	180 x 52/60	Pu G 2Ls, crowned R 100	640	47 x 12	141012
180	109	180 x 109	Pu G 2Ls	1.560	75 x 29	140429.1
200	50	200 x 50	Pu Al 2Ls, crowned R 36	685	47 x 14	142262.01
200	50	200 x 50	Pu St 2Ls	800	62 x 20	141809
200	50/56	200 x 50/56	Pu G 2Ls	915	52 x 17	140614
200	57	200 x 57	Pu G 2Ls, crowned R 140	790	47 x 15	141166
200	51/60	200 x 51/60	Pu Al 2Ls	690	47 x 16	142545
200	52/60	200 x 52/60	Pu G 2Ls	920	52 x 18	140400
200	52/60	200 x 52/60	Pu G 2Ls	920	55 x 20	140400.09
200	80	200 x 80	Pu G 2Ls	1.390	75 x 19	141603.01
200	82	200 x 82	Pu G 2Ls, crowned R 250	1.150	62 x 17	141020
200	100	200 x 100	Pu G 2Ls	1.650	75 x 21	141297.1
200	110	200 x 110	Pu G 2Ls	1.880	85 x 38	140695.01
220	80	220 x 80	Pu G 2Ls	1.550	110 x 22	141359
230	110	230 x 110	Pu G 2Ls	2.180	80 x 25	141034
250	50/55	250 x 50/55	Pu St 2Ls	1.100	52 x 18	140680.01
250	64/86	250 x 64/86	Pu G 2Ls	1.370	62 x 19	140505
250	80	250 x 80	Pu St 2Ls	1.770	90 x 20	142159
250	80	250 x 80	Pu St 2Ls	1.770	110 x 22	142159.04
250	124	250 x 124	Pu G 2Ls	2.600	90 x 30	140503
250	124	250 x 124	Pu St 2Ls	2.600	110 x 43	141170.01
260	67/68,5	260 x 67/68,5	Pu G 2Ls	1.500	62 x 16	141405

Dimensions in mm. Further dimensions, other PU-qualities, other hardnesses Shore A and special executions on request.





# ACLATHAN®/Vulkollan® complete rollers with special seal Pu St 2LD

### Tyre

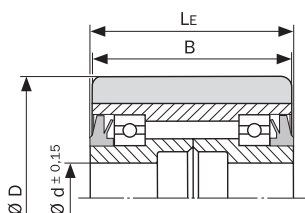
Polyurethane elastomer,  
ca. 93 Shore A

### Properties

- extremely abrasion resistant
- elastic damping
- silent running
- no chalking
- spray water and dust proof

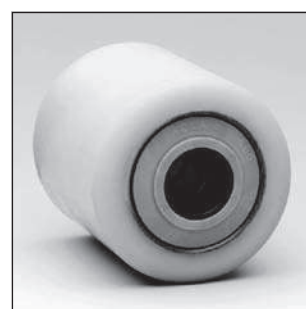
### Nominal size of article

(diagrammatic sketch)



### Remarks

- <sup>1)</sup> Axle bore can be modified by using bushes
- <sup>2)</sup> in kg at 6 km/h straight running. Max. load for ball bearings as per manufacturer
- <sup>3)</sup> other ball bearings like 2RS or ZV on request



D	d <sup>1)</sup>	B	LE	Description	Execution	Load <sup>2)</sup>	Bearing <sup>3)</sup>	Art. No.
82	20	60	65	82/20 x 60/65	Pu St 2LD	500	6006-2RS	142622.03
82	20	72	78	82/20 x 72/78	Pu St 2LD	540	6204-2RS	142351
82	20	82	86	82/20 x 82/86	Pu St 2LD	620	6006-2RS	142623.01
85	12	60	62	85/12 x 60/62	Pu St 2LD	500	6006-2RS	140933.21
85	12	60	65	85/12 x 60/65	Pu St 2LD	470	6006-2RS	140933.14
85	12	65	70	85/12 x 65/70	Pu St 2LD	550	6006-2RS	140934.19
85	12	70	75	85/12 x 70/75	Pu St 2LD	550	6006-2RS	140935.14
85	12	80	82	85/12 x 80/82	Pu St 2LD	620	6006-2RS	140937.22
85	12	80	85	85/12 x 80/85	Pu St 2LD	620	6006-2RS	140937.14
85	12	85	90	85/12 x 85/90	Pu St 2LD	660	6006-2RS	140938.15
85	12	90	95	85/12 x 90/95	Pu St 2LD	700	6006-2RS	140939.15
85	12	100	102	85/12 x 100/102	Pu St 2LD	780	6006-2RS	140941.22
85	12	100	105	85/12 x 100/105	Pu St 2LD	780	6006-2RS	140941.19
85	12	105	110	85/12 x 105/110	Pu St 2LD	820	6006-2RS	140942.14
85	13	75	76	85/13 x 75/76	Pu St 2LD	580	6006-2RS	140936.21
85	17	45	50	85/17 x 45/50	Pu St 2LD	350	6006-2RS	140930.08
85	17	50	55	85/17 x 50/55	Pu St 2LD	390	6006-2RS	140931.08
85	17	55	60	85/17 x 55/60	Pu St 2LD	430	6006-2RS	140932.08
85	17	60	62	85/17 x 60/62	Pu St 2LD	500	6006-2RS	140933.08
85	17	60	65	85/17 x 60/65	Pu St 2LD	470	6006-2RS	140933.20
85	17	65	70	85/17 x 65/70	Pu St 2LD	510	6006-2RS	140934.08
85	17	70	75	85/17 x 70/75	Pu St 2LD	550	6006-2RS	140935.08
85	17	75	80	85/17 x 75/80	Pu St 2LD	580	6006-2RS	140936.08
85	17	75	82	85/17 x 75/82	Pu St 2LD	580	6006-2RS	140936.20
85	17	80	85	85/17 x 80/85	Pu St 2LD	620	6006-2RS	140937.08
85	17	85	90	85/17 x 85/90	Pu St 2LD	660	6006-2RS	140938.08
85	17	90	95	85/17 x 90/95	Pu St 2LD	700	6006-2RS	140939.08
85	17	95	100	85/17 x 95/100	Pu St 2LD	740	6006-2RS	140940.08

Dimensions in mm. Further dimensions, other PU-qualities, other hardnesses Shore A and special executions on request.

**Tyre**

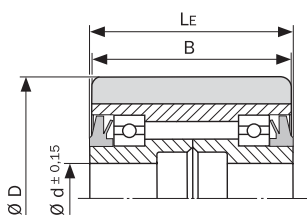
Polyurethane elastomer,  
ca. 93 Shore A

**Properties**

- extremely abrasion resistant
- elastic damping
- silent running
- no chalking
- spray water and dust proof

**Nominal size of article**

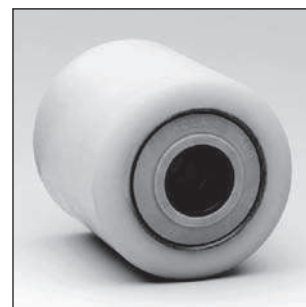
(diagrammatic sketch)



**Remarks**

- 1) Axle bore can be modified by using bushes
- 2) in kg at 6 km/h straight running. Max. load for ball bearings as per manufacturer
- 3) other ball bearings like 2RS or ZV on request

\* Execution Pu G 2LD



D	d <sup>1)</sup>	B	LE	Description	Execution	Load <sup>2)</sup>	Bearing <sup>3)</sup>	Art. No.
85	17	100	102	85/17 x 100/102	Pu St 2LD	780	6006-2RS	140941.20
85	17	100	105	85/17 x 100/105	Pu St 2LD	780	6006-2RS	140941.08
85	17	105	110	85/17 x 105/110	Pu St 2LD	820	6006-2RS	140942.08
85	17	110	115	85/17 x 110/115	Pu St 2LD	860	6006-2RS	140943.08
85	20	45	50	85/20 x 45/50	Pu St 2LD	350	6006-2RS	140930.10
85	20	50	55	85/20 x 50/55	Pu St 2LD	390	6006-2RS	140931.10
85	20	55	60	85/20 x 55/60	Pu St 2LD	430	6006-2RS	140932.10
85	20	60	65	85/20 x 60/65	Pu St 2LD	470	6006-2RS	140933.10
85	20	65	70	85/20 x 65/70	Pu St 2LD	510	6006-2RS	140934.10
85	20	70	75	85/20 x 70/75	Pu St 2LD	550	6006-2RS	140935.10
85	20	75	80	85/20 x 75/80	Pu St 2LD	580	6006-2RS	140936.10
85	20	80	85	85/20 x 80/85	Pu St 2LD	620	6006-2RS	140937.10
85	20	85	90	85/20 x 85/90	Pu St 2LD	660	6006-2RS	140938.10
85	20	90	95	85/20 x 90/95	Pu St 2LD	700	6006-2RS	140939.10
85	20	95	100	85/20 x 95/100	Pu St 2LD	740	6006-2RS	140940.10
85	20	100	105	85/20 x 100/105	Pu St 2LD	780	6006-2RS	140941.10
85	20	105	110	85/20 x 105/110	Pu St 2LD	820	6006-2RS	140942.10
85	20	110	115	85/20 x 110/115	Pu St 2LD	860	6006-2RS	140943.10
85	25	45	50	85/25 x 45/50	Pu St 2LD	350	6006-2RS	140930.12
85	25	50	55	85/25 x 50/55	Pu St 2LD	390	6006-2RS	140931.12
85	25	55	60	85/25 x 55/60	Pu St 2LD	430	6006-2RS	140932.12
85	25	60	65	85/25 x 60/65	Pu St 2LD	470	6006-2RS	140933.12
85	25	65	70	85/25 x 65/70	Pu St 2LD	510	6006-2RS	140934.12
85	25	70	75	85/25 x 70/75	Pu St 2LD	550	6006-2RS	140935.12
85	25	75	80	85/25 x 75/80	Pu St 2LD	580	6006-2RS	140936.12
85	25	80	85	85/25 x 80/85	Pu St 2LD	620	6006-2RS	140937.12
85	25	80	85	85/25 x 80/85	Pu St 2LD	620	4 x 6006-ZZ	142080
85	25	85	90	85/25 x 85/90	Pu St 2LD	660	6006-2RS	140938.12
85	25	85	90	85/25 x 85/90	Pu St 2LD	660	4 x 6006-ZZ	140938.14
85	25	90	95	85/25 x 90/95	Pu St 2LD	700	6006-2RS	140939.12
85	25	95	100	85/25 x 95/100	Pu St 2LD	740	6006-2RS	140940.12
85	25	100	102	85/25 x 100/102	Pu St 2LD	780	6006-2RS	140941.21
85	25	100	105	85/25 x 100/105	Pu St 2LD	780	6006-2RS	140941.12
85	25	105	110	85/25 x 105/110	Pu St 2LD	820	6006-2RS	140942.12
85	25	110	115	85/25 x 110/115	Pu St 2LD	860	6006-2RS	140943.12
85	25	110	115	85/25 x 110/115	Twin complete roller	850	4 x 6006-2RS	142308

Dimensions in mm. Further dimensions, other PU-qualities, other hardnesses Shore A and special executions on request.

Dimensions in mm.  
We reserve the right to change sizes.  
Further dimensions and special types on request.

Our verbal or written recommendations for any application as well as tests are carried out to the best of our knowledge. They are without engagement also as far as patent rights of third parties are concerned, and do not exempt you from checking the products sup-

plied by us to their suitability for the intended procedure and purpose.

Application, use and processing of the products are outside our control, and are exclusively the responsibility of the customer. Moreover our general sales conditions apply.

# ACLATHAN®/Vulkollan® complete rollers with bearing seat Pu St 2Ls

**Tyre**

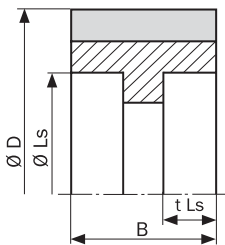
Polyurethane elastomer,  
ca. 93 Shore A

**Properties**

- high load bearing capacity
- extremely abrasion resistant
- elastic damping
- silent running
- no chalking

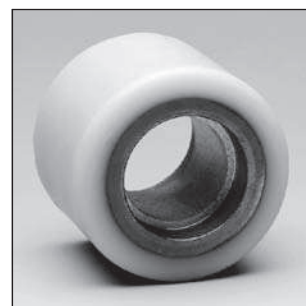
**Nominal size of article**

(diagrammatic sketch)



**Remarks**

- <sup>1)</sup> in kg at 6 km/h straight running.
- <sup>2)</sup> Bearing seat tolerances standard N7, M7 or as per order. All listed rollers can be completed with ball bearings as per DIN standard on request, type: Pu St 2L.



D	B	Description	Load <sup>1)</sup>	Bearing seat <sup>2)</sup>	Art. No.
85	45	85 x 45	350	55 x 20	140930
85	50	85 x 50	390	55 x 20	140931
85	55	85 x 55	430	55 x 20	140932
85	60	85 x 60	470	55 x 20	140933
85	65	85 x 65	510	55 x 20	140934
85	70	85 x 70	550	55 x 20	140935
85	75	85 x 75	580	55 x 20	140936
85	80	85 x 80	620	55 x 20	140937
85	85	85 x 85	660	55 x 20	140938
85	90	85 x 90	700	55 x 20	140939
85	95	85 x 95	740	55 x 20	140940
85	100	85 x 100	780	55 x 20	140941
85	105	85 x 105	820	55 x 20	140942
85	110	85 x 110	860	55 x 20	140943

**Dimensions in mm. Further dimensions, other PU-qualities, other hardnesses Shore A and special executions on request.**

TB 266/9 E, 02.10

Dimensions in mm.  
We reserve the right to  
change sizes.  
Further dimensions  
and special  
types on request.

Our verbal or written recommendations for any application as well as tests are carried out to the best of our knowledge. They are without engagement also as far as patent rights of third parties are concerned, and do not exempt you from checking the products sup-

plied by us to their suitability for the intended procedure and purpose.

Application, use and processing of the products are outside our control, and are exclusively the responsibility of the customer. Moreover our general sales conditions apply.

# ACLATHAN®/Vulkollan® complete rollers with special seal for high speeds

## Pu Al 2LD

### Tyre

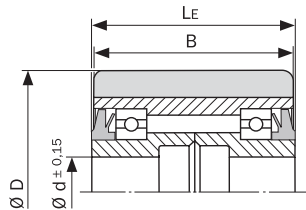
Polyurethane elastomer, ca. 93 Shore A

### Properties

- extremely abrasion resistant
- elastic damping
- silent running
- no chalking
- spray water and dust proof

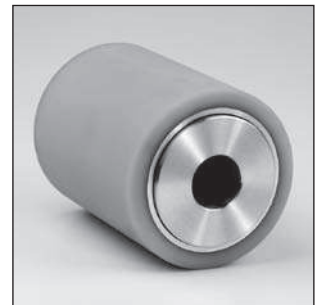
### Nominal size of article

(diagrammatic sketch)



### Remarks

- <sup>1)</sup> Axle bore can be modified by using bushes
- <sup>2)</sup> in kg at **9 km/h** straight running. Max. load for ball bearings as per manufacturer
- <sup>3)</sup> other ball bearings like 2RS or ZV on request
- <sup>4)</sup> high grade (hg) complete roller with aluminium hub



D	d <sup>1)</sup>	B	LE	Description	Execution <sup>4)</sup>	Load <sup>2)</sup>	Bearing <sup>3)</sup>	Art. No.
85	12	60	65	85/12 x 60/65	hg-roller/Alu	450	6305-2RS	140933.15
85	12	65	70	85/12 x 65/70	hg-roller/Alu	490	6305-2RS	140934.14
85	12	70	75	85/12 x 70/75	hg-roller/Alu	530	6305-2RS	140935.18
85	12	75	80	85/12 x 75/80	hg-roller/Alu	570	6305-2RS	140936.16
85	12	80	85	85/12 x 80/85	hg-roller/Alu	600	6305-2RS	140937.18
85	12	85	90	85/12 x 85/90	hg-roller/Alu	645	6305-2RS	140938.16
85	12	90	95	85/12 x 90/95	hg-roller/Alu	680	6305-2RS	140939.16
85	12	95	100	85/12 x 95/100	hg-roller/Alu	720	6305-2RS	140940.17
85	12	100	105	85/12 x 100/105	hg-roller/Alu	760	6305-2RS	140941.16
85	12	105	110	85/12 x 105/110	hg-roller/Alu	800	6305-2RS	140942.16
85	12	110	115	85/12 x 110/115	hg-roller/Alu	835	6305-2RS	140943.16
85	17	60	65	85/17 x 60/65	hg-roller/Alu	450	6305-2RS	140933.16
85	17	65	70	85/17 x 65/70	hg-roller/Alu	490	6305-2RS	140934.15
85	17	70	75	85/17 x 70/75	hg-roller/Alu	530	6305-2RS	140935.19
85	17	75	80	85/17 x 75/80	hg-roller/Alu	570	6305-2RS	140936.17
85	17	80	85	85/17 x 80/85	hg-roller/Alu	600	6305-2RS	140937.19
85	17	85	90	85/17 x 85/90	hg-roller/Alu	645	6305-2RS	140938.17
85	17	90	95	85/17 x 90/95	hg-roller/Alu	680	6305-2RS	140939.17
85	17	95	100	85/17 x 95/100	hg-roller/Alu	720	6305-2RS	140940.18
85	17	100	105	85/17 x 100/105	hg-roller/Alu	760	6305-2RS	140941.17
85	17	105	110	85/17 x 105/110	hg-roller/Alu	800	6305-2RS	140942.17
85	17	110	115	85/17 x 110/115	hg-roller/Alu	835	6305-2RS	140943.17

Dimensions in mm. Further dimensions, other PU-qualities, other hardnesses Shore A and special executions on request.





# ACLATHAN®/Vulkollan® traction wheels with key way Pu G Kn/Pu St Kn

### Tyre

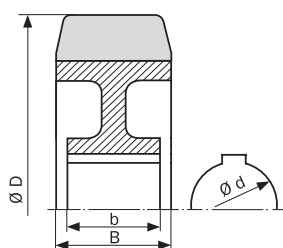
Polyurethane elastomer,  
ca. 93 Shore A

### Properties

- high load bearing capacity
- extremely abrasion resistant
- elastic damping
- silent running
- no chalking
- temperature range -30°C to +80°C (-22°F to 176°F)

### Nominal size of article

(diagrammatic sketch)

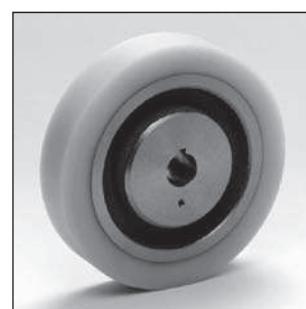


### Remarks

<sup>1)</sup> in kg at 6 km/h  
straight running

### Hint

Bore  $\varnothing$  d and key way size  
on request



D	d	B	b	Description	Tyre	Load <sup>1)</sup>	Art. No.
75	25	60		75/25 x 60		350	141332
80	14	20		80/14 x 20		130	141498
84	25	30		84/25 x 30		200	141402
95,25	17,15	50,8		95,25/17,15 x 50,8		380	141115
100	25	60		100/25 x 60		425	141409
125	20	40	42,5	125/20 x 40/42,5		400	140704
125	20	50	38	125/20 x 50/38		490	140742
125	20	40	42,5	125/20 x 40/42,5		400	140763
125	20	40	33	125/20 x 40/33		400	141477
125	20	50	38	125/20 x 50/38	with middle groove	390	141103
125	20	60	38	125/20 x 60/38		590	140681
125	25	60	38	125/25 x 60/38		590	141457
125	25	60		125/25 x 60		490	141410
125	30	40	45	125/30 x 40/45		400	140895
125	30	50	35	125/30 x 50/35	crowned R 300	400	141522
125	30	50	35	125/30 x 50/35		490	142154
125	35	40	45	125/35 x 40/45		400	142278
145	30	50	43	145/30 x 50/43		535	142269
150	20	40	43	150/20 x 40/43		455	140990
150	20	50	36	150/20 x 50/36		600	141620
150	25,43	50,8		150/25,43 x 50,8		590	141397
150	30	60	38	150/30 x 60/38		720	142218
150	35	50	56	150/35 x 50/56		660	142273
160	18	27	45	160/18 x 27/45		350	142193
160	20	50	38	160/20 x 50/38		640	140840
160	25	55		160/25 x 55		680	141102
160	25	50	38	160/25 x 50/38		640	141337.01
160	30	50	38	160/30 x 50/38		640	141075
160	30	55		160/30 x 55		680	141517
160	30	49,5	50	160/30 x 49,5/50		630	141987

Dimensions in mm. Further dimensions, other PU-qualities, other hardnesses Shore A and special executions on request.



# ACLATHAN®/Vulkollan® traction wheels with flange mounting bores Pu G F

## Tyre

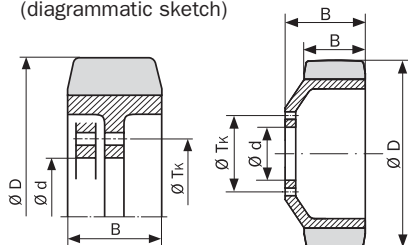
Polyurethane elastomer,  
ca. 93 Shore A

## Properties

- high load bearing capacity
- extremely abrasion resistant
- elastic damping
- silent running
- no chalking

## Nominal size of article

(diagrammatic sketch)

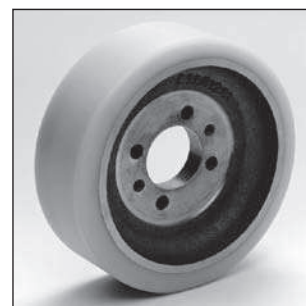


## Remarks

<sup>1)</sup> in kg at 6 km/h  
straight running

## Hint

Tolerances for I.D. and position of the flange on request. Also deliverable in GRIPHTAN for better traction, however with reduced load bearing capacity.



D	d	B	Description	Tyre	Load <sup>1)</sup>	Tk	Number of holes	Art. No.
200	50	60	200/50 x 60	plain	950	80	12	143023
200	50	85	200/50 x 85	plain	1.310	72	4 + 2 M10	142041.01
200	50	85	200/50 x 85	plain	1.200	72	4 + 2 M10	140492.1
200	50	85	200/50 x 85	with profile	1.185	72	4	140746
205	60	82/89	205/60 x 82/89	plain	1.250	92	5	141307
205	60	82/89	205/60 x 82/89	with profile	1.225	92	5	141306
215	60	82/89	215/60 x 82/89	plain	1.250	92	5	141656
225		70/103,5	225 x 70/103,5	plain	1.150	156	12	141377.01
230	30	90	230/30 x 90	plain	1.350	65	6	142359
230	45	82	230/45 x 82	plain	1.450	70	5 + 3 M10	141650.03
230	45	70/82	230/45 x 70/82	plain	1.250	70	5 + 3 M10	141003.10
230	65	70/83	230/65 x 70/83	plain	1.250	90	5	141003.13
230	65	80	230/65 x 80	plain	1.280	95	4	141851
230	65	90	230/65 x 90	plain	1.450	95	4	142304
233	45	85/90,5	233/45 x 85/90,5	crowned R 600	1.150	70	5	142198.01
233	50	85	233/50 x 85	with profile crowned R 600	1.090	80	4	141346
233	50	85	233/50 x 85	plain	1.370	80	4	141535
240	80	75	240/80 x 75	plain	1.300	112	5	142357
250	50	82,5	250/50 x 82,5	with profile	1.460	80	4	141225
250	60	90	250/60 x 90	with profile	1.620	80	4	141708
250	60	90	250/60 x 90	plain	1.620	95	4	141709
250	80	75	250/80 x 75	plain	1.310	112	5	142966
250	80	75	250/80 x 75	plain	1.400	112	5	142051
250	80	75	250/80 x 75	plain	1.350	112	4	141578
250	80	80	250/80 x 80	crowned R 245	1.130	112	5	141728
250	80	82	250/80 x 82	plain	1.500	112	5	140484
250	45	115	250/45 x 115	plain	1.800	76	6 + 2 M10	140510
250	120	50	250/120 x 50	plain	920	158	6	141264.01

Dimensions in mm. Further dimensions, other PU-qualities, other hardnesses Shore A and special executions on request.



**Tyre**

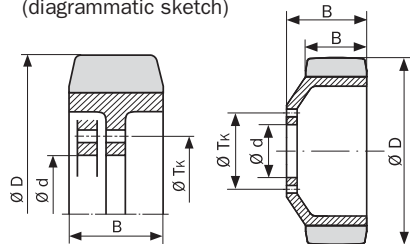
Polyurethane elastomer, ca. 93 Shore A

**Properties**

- high load bearing capacity
- extremely abrasion resistant
- elastic damping
- silent running
- no chalking

**Nominal size of article**

(diagrammatic sketch)

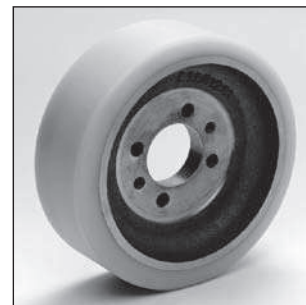


**Remarks**

<sup>1)</sup> in kg at 6 km/h straight running

**Hint**

Tolerances for I.D. and position of the flange on request. Also deliverable in GRIPTHAN for better traction, however with reduced load bearing capacity.



D	d	B	Description	Tyre	Load <sup>1)</sup>	T <sub>k</sub>	Number of holes	Art. No.
254	80	85	254/80 x 85	plain	1.580		5	141 104
254	80	100	254/80 x 100	plain	1.860	112	5	140 604
254	80	125	254/80 x 125 mm	crowned R 300	1.880	112	5	142 424
255	80	90	255/80 x 90	plain	1.580	112	5	141 464
260		84/114	260 x 84/114	plain	1.680	188	6	140 654
260		84/114	260 x 84/114	plain	1.680	188	6	140 674
260		100/132	260 x 100/132	plain	1.920	165	6	140 693
270		100	270 x 100	plain	1.880	170	12 + 2 M8	142 241
270		95/100	270 x 95/100	plain	1.880	170	12 + 2 M8	142 313
280	80	75	280/80 x 75	plain	1.490	112	5	140 411
300	88,5	70	300/88,5 x 70	plain	1.550	115	5	140 712
300	80	100	300/80 x 100	plain	1.870	112	5	140 428
300	80	100	300/80 x 100	plain	1.870	112	5	141 300
300	80	120	300/80 x 120	plain	2.420	112	5	142 572
300	80	130	300/80 x 130	plain	2.810	112	5	142 884
310	80	104	310/80 x 104	plain	2.020	112	5	140 982.1
310	80	104	310/80 x 104	plain	2.020	112	5	141 047
310	80	110	310/80 x 110	plain	2.350	112	5	142 906
310	80	120	310/80 x 120	plain	2.590	112	7	142 425.02
310	80	130	310/80 x 130	plain	2.850	112	5	143 044
313	80	125	313/80 x 125	plain	2.650	112	5	140 760
313	80	100	313/80 x 100	plain	2.120	112	5	140 759
330	80	135	330/80 x 135	plain	2.900	112	7	141 694
330	98	89	330/98 x 89	plain	2.050	164	6	141 325
343	65	110	343/65 x 110	plain	2.720	105	5	141 339
343	80	86/98	343/80 x 86/98	plain	1.850	112	7	141 039
343	80	114	343/80 x 114	plain	2.650	112	7	140 390.2
343	80	114	343/80 x 114	plain	2.450	112	5	140 389.1
343	80	136	343/80 x 136	plain	3180	112	7	142 583.02
343	80	140	343/80 x 140	plain	2.980	112	7	140 405.06
343	90	114	343/90 x 114	plain	2.660	125	7	143 290
343	90	136	343/90 x 136	plain	3.220	125	7	142 583.05
350	80	130	350/80 x 130	plain	3.170	112	7	142 356
360	90	130	360/90 x 130	plain	4.600	125	7	143 302
406	80	152	406/80 x 152	plain	4.450	112	10	142 189.1
406		127/200	406 x 127/200	plain	3.280	260	10 + 2 M16	140 622
406		152/200	406 x 152/200	plain	3.920	260	10 + 2 M16	140 611
406		178/200	406 x 178/200	plain	4.600	260	10 + 2 M16	140 905

**Dimensions in mm. Further dimensions, other PU-qualities, other hardnesses Shore A and special executions on request.**

TB 266/12 E, 02.10

Dimensions in mm. We reserve the right to change sizes. Further dimensions and special types on request.

Our verbal or written recommendations for any application as well as tests are carried out to the best of our knowledge. They are without engagement also as far as patent rights of third parties are concerned, and do not exempt you from checking the products sup-

plied by us to their suitability for the intended procedure and purpose.

Application, use and processing of the products are outside our control, and are exclusively the responsibility of the customer. Moreover our general sales conditions apply.



# ACLATHAN<sup>®</sup>/Vulkollan<sup>®</sup> tyres cylindrical (with/without profile) Pu St

### Tyre

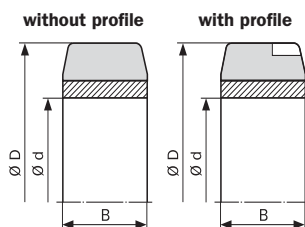
Polyurethane elastomer,  
ca. 93 Shore A

### Properties

- high load bearing capacity
- extremely abrasion resistant
- elastic damping
- silent running
- no chalking

### Nominal size of article

(diagrammatic sketch)



### Remarks

- <sup>1)</sup> I.D. of the steel band suitable for hub O.D. h11 press fit
- <sup>2)</sup> in kg at 6 km/h straight running

### Hint

Also deliverable in GRIPTHAN<sup>®</sup> for better traction, however with reduced load bearing capacity



D	d <sup>1)</sup>	B	Description	Tyre	Load <sup>2)</sup>	Art. No.
100	75	32	100/75 x 32		300	140 715
100	75	40	100/75 x 40		380	142 537
120	75	40	120/75 x 40		420	141 712
125	75	25	120/75 x 25		270	143 020
125	75	40	125/75 x 40		430	140 265
125	75	50	125/75 x 50		540	140 001
125	76	50	125/76 x 50		550	143 161
125	80	50	125/80 x 50		550	142 433
127	76	74	127/76 x 74		820	141 747
133	100	44	133/100 x 44		530	143 158
140	100	40	140/100 x 40		500	141 389
140	100	50	140/100 x 50		620	141 055
140	100	75	140/100 x 75		935	142 954
145	100	50	145/100 x 50		630	142 151
145	100	180	145/100 x 180		2.270	141 027
145	101	40	145/101 x 40		500	141 354
150	85	100	150/85 x 100		1.250	140 266
150	100	30	150/100 x 30		385	142 775
150	100	40	150/100 x 40		510	140 002
150	100	50	150/100 x 50		640	140 286
150	100	55	150/100 x 55		710	140 003
150	100	65	150/100 x 65		835	140 599
150	100	75	150/100 x 75		970	140 431
150	100	100	150/100 x 100		1.320	142 401
150	100	110	150/100 x 110		1.420	140 487
150	100	130	150/100 x 130		1.680	140 880
150	100	180	150/100 x 180		2.310	140 488
158	100	50	158/100 x 50	crowned R 200	530	140 267.02

**Dimensions in mm. Further dimensions, other PU-qualities, other hardnesses Shore A and special executions on request.**

**Tyre**

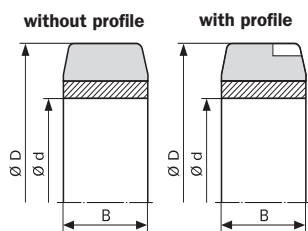
Polyurethane elastomer,  
ca. 93 Shore A

**Properties**

- high load bearing capacity
- extremely abrasion resistant
- elastic damping
- silent running
- no chalking

**Nominal size of article**

(diagrammatic sketch)

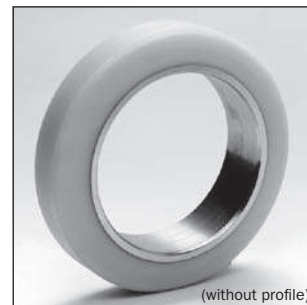


**Remarks**

- <sup>1)</sup> I.D. of the steel band suitable for hub O.D. h11 press fit
- <sup>2)</sup> in kg at 6 km/h straight running

**Hint**

Also deliverable in GRIPHTHAN® for better traction, however with reduced load bearing capacity



(without profile)

D	d <sup>1)</sup>	B	Description	Tyre	Load <sup>2)</sup>	Art. No.
160	100	50	160/100 x 50		660	140 267
160	120	50	160/120 x 50		710	143 249
160	125	15	160/125 x 15		220	141 749
170	100	75	170/100 x 75		1.030	140 366
180	105	100	180/105 x 100		1.440	141 555
180	120	20	180/120 x 20		300	141 155
180	120	50	180/120 x 50		745	140 004
180	120	75	180/120 x 75		1.130	140 903.01
180	120	100	180/120 x 100		1.520	141 245
190,5	127	50,8	190,5/127 x 50,8		790	140 309
200	100	75	200/100 x 75		1.090	140 008
200	105	85	200/105 x 85		1.265	140 229
200	120	80	200/120 x 80		1.260	140 231
200	120	105	200/120 x 105		1.660	140 007
200	140	30	200/140 x 30		500	142 963
200	140	50	200/140 x 50		830	140 005.01
200	140	70	200/140 x 70		1.170	140 006.02
200	140	100	200/140 x 100		1.700	142 735
200	140	150	200/140 x 150		2.500	140 022
200	150	60	200/150 x 60		1.035	140 268.01
204	120	76	204/120 x 76		1.210	140 367
220	127	90	220/127 x 90		1.480	140 782.01
220	140	90	220/140 x 90		1.560	140 857
220	170	50	220/170 x 50		915	142 614
220	185	95	220/185 x 95		1.910	140 241
230	140	100	230/140 x 100		1.750	140 269.01
230	145	85	230/145 x 85		1.500	142 589
230	170	50	230/170 x 50		950	140 425
230	170	75	230/170 x 75		1.440	140 394
230	170	75	230/170 x 75	with profile	1.440	141 292
230	178	70	230/170 x 50		1.410	140 270
230	178	85	230/178 x 85	with profile	1.710	140 271
240	191	82	240/191 x 82		1.750	141 653
245	170	80	245/170 x 80		1.550	141 767
250	140	75	250/140 x 75		1.310	140 017
250	140	130	250/140 x 130		2.330	140 011
250	140	130	250/140 x 130	with profile	2.330	140 303
250	170	75	250/170 x 75		1.470	141 844
250	170	80	250/170 x 80		1.570	140 010
250	170	90	250/170 x 90		1.780	141 645
250	170	100	250/170 x 100		1.970	140 640
250	170	105	250/170 x 105		2.070	141 993.01
250	180	140	250/180 x 140		2.820	140 368

Dimensions in mm. Further dimensions, other PU-qualities, other hardnesses Shore A and special executions on request.

**Tyre**

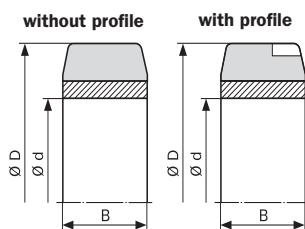
Polyurethane elastomer,  
ca. 93 Shore A

**Properties**

- high load bearing capacity
- extremely abrasion resistant
- elastic damping
- silent running
- no chalking

**Nominal size of article**

(diagrammatic sketch)



**Remarks**

- <sup>1)</sup> I.D. of the steel band suitable for hub O.D. h11 press fit
- <sup>2)</sup> in kg at 6 km/h straight running

**Hint**

Also deliverable in GRIPHTHAN® for better traction, however with reduced load bearing capacity



D	d <sup>1)</sup>	B	Description	Tyre	Load <sup>2)</sup>	Art. No.
250	190	50	250/190 x 50		1.035	140009
250	190	60	250/190 x 60		1.240	140224
250	190	70	250/190 x 70		1.450	140219.01
250	190	80	250/190 x 80		1.660	141121
250	190	85	250/190 x 85		1.860	with groove 140471
250	190	105	250/190 x 105		2.220	140272
250	195	85	250/195 x 85		1.830	142085
254	158	90	254/158 x 90		1.700	142211
254	158	126	254/158 x 126		2.390	140369
254	158,7	177	254/158,7 x 177	with central groove	3.380	141951
254	165,1	75	254/165,1 x 75	with profile	1.440	140486.01
254	165,1	101,6	254/165,1 x 101,6		1.975	142282
254	165,1	127	254/165,1 x 127		2.470	140655
254	188	100	254/188 x 100		2.090	141450
254	190,5	177,8	254/190,5 x 177,8		3.810	141251
254	203,2	76,2	254/203,2 x 76,2		1.680	140307
254	203,2	88	254/203,2 x 88		1.960	141949
254	203,2	177	254/203,2 x 177		1.940	141952
254	220	60	254/220 x 60		1.410	140841
254	220	75	254/220 x 75		1.765	140558
260	170	60	260/170 x 60		1.170	140273
260	170	85	260/170 x 85	with profile	1.660	140365
260	170	105	260/170 x 105	with profile	2.050	140274
260	210	40	260/210 x 40		965	140012
260	220	114	260/220 x 114		2.695	141045
265	160	150	265/160 x 150		2.890	140476
266,7	203,2	88,9	266,7/203,2 x 88,9		1.970	140744
280	200	100	280/200 x 100		2.195	141486
280	203	90	280/203 x 90		2.010	143097
282,5	219	100	282,5/219 x 100		2.350	140646
285	200	100	285/200 x 100		2.195	140013
285	220	75	285/220 x 75		1.765	140244
285	220	80	285/220 x 80		1.880	142382
285	220	125	285/220 x 125		2.980	140275
285	228	100	285/228 x 100		2.430	141461
290	185	105	290/185 x 105	with profile	2.200	140225
300	170	85	300/170 x 85		1.650	140359
300	203	75	300/203 x 75		1.660	140236
300	203	90	300/203 x 90		2.010	140014
300	203	100	300/203 x 100		2.230	140447
300	220	120	300/220 x 120		2.860	141044
300	225	75	300/225 x 75		1.800	143126
300	230	100	300/254/230 x 100		2.550	140228
300	230	100	300/254/230 x 100	with profile	2.550	140227
300	240	75	300/240 x 75		1.890	141007
300	240	100	300/240 x 100		2.550	140512
304,8	202,6	101,6	304,8/202,6 x 101,6		2.260	141029
305	154,5	150	305/154,5 x 150		2.730	140373
305	228,1	127	305/228,1 x 127		3.130	141213
305	254	76	305/254 x 76		2.010	140308

Dimensions in mm. Further dimensions, other PU-qualities, other hardnesses Shore A and special executions on request.

**Tyre**

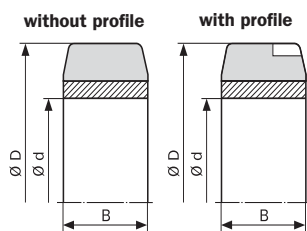
Polyurethane elastomer, ca. 93 Shore A

**Properties**

- high load bearing capacity
- extremely abrasion resistant
- elastic damping
- silent running
- no chalking

**Nominal size of article**

(diagrammatic sketch)



**Remarks**

- <sup>1)</sup> I.D. of the steel band suitable for hub O.D. h11 press fit
- <sup>2)</sup> in kg at 6 km/h straight running

**Hint**

Also deliverable in GRIPHTHAN® for better traction, however with reduced load bearing capacity



(without profile)

D	d <sup>1)</sup>	B	Description	Tyre	Load <sup>2)</sup>	Art. No.
310	220	60	310/220 x 60		1.410	140 374
310	220	120	310/220 x 120		2.860	140 375
311,2	206,4	114,3	311,2/206,4 x 114,3		2.550	140 376
313	203	120	313/203 x 120		2.685	140 642
313	203	130	313/203 x 130	with profile	2.910	140 315
325	203	90	325/203 x 90		1.985	142 721
330	203	90	330/203 x 90		1.980	140 340
330	203	126	330/203 x 126		2.790	140 378
330	224	95	330/224 x 95		2.280	141 281
330	225	120	330/225 x 120		2.880	140 276
330	235	126,5	330/235 x 126,5		3.170	143 131
330	254	127	330/254 x 127		3.380	140 310
330	270	90	330/270 x 90		2.510	140 379
330	270	200	330/270 x 200		5.690	140 320
330,2	254	88,9	330,2/254 x 88,9		2.350	140 306
330,2	254	114,3	330,2/254 x 114,3		3.040	141 687
330,2	254	114,3	330,2/254 x 114,3		3.040	141 132
330,2	254	152,4	330,2/254 x 152,4		4.055	140 676
330,2	266,7	152,4	330,2/266,7 x 152,4		4.240	140 761
343	203	140	343/203 x 140		3.070	140 499
343	203	152	343/203 x 152		3.330	141 648
343	204	152	343/204 x 152		3.350	142 945
343	225	114	343/225 x 114		2.710	141 320
343	270	140	343/270 x 140		3.890	143 031
343	283	126	343/283 x 126		3.700	142 930
350	255	110	350/255 x 110		2.900	140 381
350	270	110	350/270 x 110		3.060	140 606
350	280	21	350/280 x 21		600	142 953
350	280	90	350/280 x 90		2.575	140 339
355,6	260,4	196,8	355,6/260,4 x 196,8		5.300	142 994
356	285	127	356/285 x 127		3.730	141 179
356	285	152,4	356/285 x 152,4		4.480	141 388
360	220	120	360/220 x 120		2.760	141 122
360	270	75	360/270 x 75		2.045	140 439
366,5	220	120	366,5/220 x 120		2.740	141 814
380	285	202	380/285 x 202		5.790	142 127
381	273,1	165,1	381/273,1 x 165,1		4.560	142 995
381	285	76,2	381/285 x 76,2		2.175	141 257
381	285	127	381/285 x 127		3.640	140 623
381	285	152,4	381/285 x 152,4		4.365	141 513
381	308	152,4	381/308 x 152,4		4.760	141 133
390	326	105	390/326 x 105		3.440	142 890

Dimensions in mm. Further dimensions, other PU-qualities, other hardnesses Shore A and special executions on request.

**Tyre**

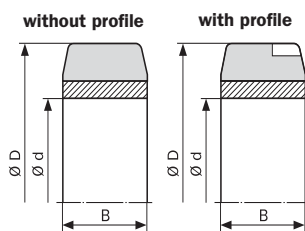
Polyurethane elastomer, ca. 93 Shore A

**Properties**

- high load bearing capacity
- extremely abrasion resistant
- elastic damping
- silent running
- no chalking

**Nominal size of article**

(diagrammatic sketch)



**Remarks**

- 1) I.D. of the steel band suitable for hub O.D. h11 press fit
- 2) in kg at 6 km/h straight running

**Hint**

Also deliverable in GRIPHTHAN® for better traction, however with reduced load bearing capacity



D	d <sup>1)</sup>	B	Description	Tyre	Load <sup>2)</sup>	Art. No.
405	290	130	405/290 x 130		3.695	140 021
405	290	145	405/290 x 145		4.120	140 223
405	305	65	405/305 x 65		1.940	141 608
405	305	75	405/305 x 75		2.230	140 015
405	305	130	405/305 x 130		3.900	140 016.01
406	305	178	406/305 x 178		5.375	140 347
413	285	177	413/285 x 177		4.925	142 167
415	305	75	415/305 x 75		2.210	140 445
415	305	90	415/305 x 90		2.670	140 384
415	305	225	415/305 x 225		6.670	140 636
420	356	110	420/356 x 110		3.960	142 891
445	381	178	445/381 x 178		6.670	140 544
450	386	114	450/386 x 114		4.395	142 892
500	370	85	500/370 x 85		2.840	140 321
500	370	120	500/370 x 120		3.980	142 752
500	370	140	500/370 x 140		4.650	140 923
500	410	100	500/410 x 100	crowned R 250	2.970	143 235.01
500	410	100	500/410 x 100		3.700	141 492
500	410	120	500/410 x 120		4.300	142 925
514	406	127	514/406 x 127		4.720	141 766.01
560	390	255	560/390 x 255		9.190	142 917
560	404	255	560/404 x 255		8.630	140 385
560	406	204	560/406 x 204		6.960	140 346
560	406	254	560/406 x 254		8.600	140 959
610	410	150	610/410 x 150		4.590	140 341
620	410	200	620/410 x 200		5.950	143 219
620	485	200	620/485 x 200		8.100	140 612

Dimensions in mm. Further dimensions, other PU-qualities, other hardnesses Shore A and special executions on request.

Dimensions in mm. We reserve the right to change sizes. Further dimensions and special types on request.

Our verbal or written recommendations for any application as well as tests are carried out to the best of our knowledge. They are without engagement also as far as patent rights of third parties are concerned, and do not exempt you from checking the products sup-

plied by us to their suitability for the intended procedure and purpose. Application, use and processing of the products are outside our control, and are exclusively the responsibility of the customer. Moreover our general sales conditions apply.

# ACLATHAN®/Vulkollan® tyres conical (symmetrical/asymmetrical) Pu E

**Tyre**

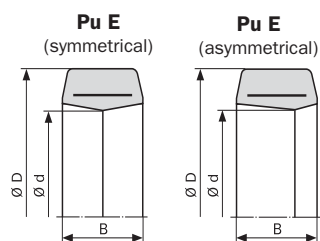
Polyurethane elastomer,  
ca. 93 Shore A

**Properties**

- high load bearing capacity
- extremely abrasion resistant
- elastic damping
- silent running
- no chalking

**Nominal size of article**

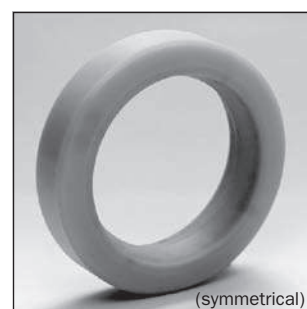
(diagrammatic sketch)


**Remarks**

- <sup>1)</sup> I.D. of the tyre is suitable for rated rims with h11 press-fit in kg at 6 km/h straight running
- <sup>2)</sup>

**Hint**

Also deliverable in GRIPHTHAN® for better traction, however with reduced load bearing capacity. Profile execution see column „Tyre“



D	d <sup>1)</sup>	B	Description	Tyre	Load <sup>2)</sup>	Partition	↔	Art. No.
125	75	50	125/75 x 50		490	symmetrical	15	140 100
139,7	100	50	139,7/100 x 50		560	symmetrical	14	142 439
140	100	50	140/100 x 50		560	symmetrical	14	142 391
150	100	50	150/100 x 50		580	symmetrical	14	140 101
180	105	100	180/105 x 100		1.300	symmetrical	8	140 222
180	120	50	180/120 x 50		670	symmetrical	15	140 102.01
195	120	125	195/120 x 125		1.730	asymmetrical	15/6	141 702
200	100	75	200/100 x 75		980	symmetrical	15	140 482
200	105	85	200/105 x 85		1.140	symmetrical	15	140 103.04
200	105	85	200/105 x 85	with profile	1.140	symmetrical	15	140 226
200	140	50	200/140 x 50		750	symmetrical	15	140 104
240	168	114	240/168 x 114		1.900	symmetrical	10	140 254
285	200	100	285/200 x 100		1.970	symmetrical	8	140 105
298	200	75	298/200 x 75		1.490	symmetrical	15	140 393
300	200	85	300/200 x 85	crowned R 65	1.330	symmetrical	10	140 355
300	203	100	300/203 x 100		2.000	symmetrical	8	140 106
310	200	75	310/200 x 75		1.460	symmetrical	15	140 107
310	200	120	310/200 x 120	with profile	2.340	asymmetrical	15/6	140 109
310	200	120	310/200 x 120		2.340	asymmetrical	15/6	140 108
320	200	75	320/200 x 75		1.550	symmetrical	15	140 520
343	203	140	343/203 x 140		2.760	asymmetrical	15/6	140 328
343	225	114	343/225 x 114		2.440	symmetrical	8	140 110
343	225	140	343/225 x 140		3.000	symmetrical	15/6	140 288
360	223	115	360/223 x 115	crowned R 180	1.880	symmetrical	8	140 395
360	270	85	360/270 x 85		2.080	symmetrical	15	140 565
406	267	127	406/267 x 127		2.020	asymmetrical	15/6	140 111
406	267	152	406/267 x 152		3.490	asymmetrical	15/6	140 253
406	267	178	406/267 x 178		4.090	asymmetrical	15/6	140 112

Dimensions in mm. Further dimensions, other PU-qualities, other hardnesses Shore A and special executions on request.





# ACLATHAN®/Vulkollan® tyres undulated I.D. Pu E w

**Tyre**

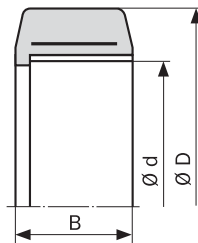
 Polyurethane elastomer,  
 ca. 80 or 93 Shore A

**Properties**

- high load bearing capacity
- extremely abrasion resistant
- elastic damping
- silent running
- no chalking
- easily exchangeable

**Nominal size of article**

(diagrammatic sketch)


**Remarks**
<sup>1)</sup> in kg at 6 km/h straight running

**Hint**

This tyre requires special rims



D	d	B	Description	Tyre	Load <sup>1)</sup>	Hardness Shore A	Art. No.
210	162	55,2	210/162 x 55,2	plain	820	93 Shore A	140549
210	162	70	210/162 x 70	plain	1.040	93 Shore A	140869
210	162	70	210/162 x 70	with profile	1.040	93 Shore A	141016
260	202	85	260/202 x 85	plain	300	75 Shore A	141460
260	202	85	260/202 x 85	plain	500	80 Shore A	140904
260	202	85	260/202 x 85	plain	1.510	93 Shore A	140583
260	202	100	260/202 x 100	plain	600	80 Shore A	140952
260	202	100	260/202 x 100	plain	1.780	93 Shore A	140726
261	202	85	261/202 x 85	with profile	460	80 Shore A	140875
261	202	85	261/202 x 85	with profile	1.510	93 Shore A	141217
270	212,1	90	270/212,1 x 90	plain	500	80 Shore A, blue	141919.02
270	212,1	90	270/212,1 x 90	plain	1.600	93 Shore A	141919

Dimensions in mm. Further dimensions, other PU-qualities, other hardnesses Shore A and special executions on request.

 Dimensions in mm.  
 We reserve the right to  
 change sizes.  
 Further dimensions  
 and special  
 types on request.

 Our verbal or written recommenda-  
 tions for any application as well as  
 tests are carried out to the best  
 of our knowledge. They are without  
 engagement also as far as patent  
 rights of third parties are con-  
 cerned, and do not exempt you  
 from checking the products sup-

 plied by us to their suitability for  
 the intended procedure and purpose.  
  
 Application, use and processing of  
 the products are outside our con-  
 trol, and are exclusively the respon-  
 sibility of the customer. Moreover  
 our general sales conditions apply.



# ACLATHAN<sup>®</sup>/Vulkollan<sup>®</sup> (Pu N L) or ACLAMID<sup>®</sup> (Pa N L) profile rollers with/without bearing

## Type

**Type Pa NL:**  
special polymer (e.g. ACLAMID)  
with high young modulus

**Type Pu NL:**  
polyurethane elastomer  
with several hardnesses  
e.g. up to 72 Shore D

## Properties

- low rolling resistance
- small deformation
- high surface pressure
- less noise than steel rollers

## Hint

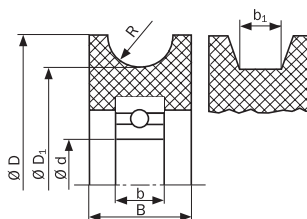
Contour of the grooves can  
be modified with mechanical  
working as per drawing or per  
sample

## Remarks

- <sup>1)</sup> I.D. can be modified  
by using bushes
- <sup>2)</sup> „Special“ = Execution  
with special bearing

## Nominal size of article/executions

### Execution without axle (diagrammatic sketch)



D	D <sub>1</sub>	d <sup>1)</sup>	B	b	b <sub>1</sub>	R	Description	Bearing <sup>2)</sup>	Art. No./Pu N L	Art. No./Pa N L
44	38	12	16	8		5,15	44/38/12 x 16/8	6001-ZZ		80119
50	40	8	25	7	20		50/40/8 x 25/7	608-ZZ		80312
50	40,5	10	13	9		5	50/40,5/10 x 13/9	6200-ZZ	60234	80205
50	41,5	10	12	8		5	50/41,5/10 x 12/8	6000-ZZ		80329
51	46	15	18	11		10,5	51/46/15 x 18/11	6202-ZZ		80206.01
53	46,8	10	8/10	8		1,6	53/46,8/10 x 8/10/8	6000-ZZ		80315
55	43	12	20	10		3	55/43/12 x 20/10	6201-ZZ		80109
56	44	8	21	7	10,7		56/44/8 x 21/7	608-RS	60028	
60	46	15	24	11		10	60/46/15 x 24/11	6202-ZZ		80102
60	50	20	11			2,5	60/50/20 x 11	through hole		80296
60	54	15	20	11	10		60/54/15 x 20/11	6202-ZZ		80328
61	53,5	8	8/10	7		1,75	61/53,5/8 x 8/10/7	608-ZZ		80321
62	44	8	16	7	7,1		62/44/8 x 16/7	608-ZZ	60329	80308
65	55	12	16	10		4,5	65/55/12 x 16/10	6201-ZZ	60309	
65	55	12	21	10		4,5/1,6	65/55/12 x 21/10	6201-ZZ	60310 (double groove)	
65	56,8	10	8/10	8		1,6	65/56,8/10 x 8/10/8	6000-ZZ		80263
65	57	25	8/12	12		1,6	65/57/25 x 8/12/12	6005-ZZ		80142
68	50	12	17	10	4		68/50/12 x 17/10	6201-ZZ		80113
68	60	12	17	10		6,5	68/60/12 x 17/10	6201-ZZ	60002	
68	60	17	17,75	14		8	68/60/17 x 17,75/14	6303-ZZ		80126

Dimensions in mm. Further dimensions, other plastic, other hardnesses Shore A and special executions on request.

**Type**

**Type Pa NL:**  
special polymer (e.g. ACLAMID) with high young modulus  
**Type Pu NL:**  
polyurethane elastomer with several hardnesses e.g. up to 72 Shore D

**Properties**

- low rolling resistance
- small deformation
- high surface pressure
- less noise than steel rollers

**Hint**

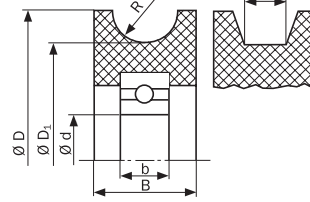
Contour of the grooves can be modified with mechanical working as per drawing or per sample

**Remarks**

- <sup>1)</sup> I.D. can be modified by using bushes
- <sup>2)</sup> „Special“ = Execution with special bearing

**Nominal size of article/executions**

Execution without axle (diagrammatic sketch)



D	D <sub>1</sub>	d <sup>1)</sup>	B	b	b <sub>1</sub>	R	Description	Bearing <sup>2)</sup>	Art. No./Pu N L	Art. No./Pa N L
70	62	17	20	12		12	70/62/17 x 20/12	6203-ZZ		80 219
70	60/57	10	26	9	10	1,6	70/60/57/10 x 26/9	6200-ZZ		80 153 (double groove)
70	60	10	17	9		6	70/60/10 x 17/9	6200-ZZ	60 312.01	
70	60	10	17	9	10		70/60/10 x 17/9	6200-ZZ		80 154
70	60	17	17	12	10		70/60/17 x 17/12	6203-ZZ		80 145
70	60	17	17	14		5,5	70/60/17 x 17/14	6303-ZZ	60 047	
70	63	15	15	11		7	70/63/15 x 15/11	6202-ZZ		80 310
70	48	20	17			5,5	70/48/20 x 17	through hole		80 297
75	67	17	20	14		6	75/67/17 x 20/14	6303-ZZ		80 001
75	58	20	15			5,5	75/58/20 x 15	through hole		80 298
78	70	12	12	8		2	78/70/12 x 12/8	6001-ZZ		80 101
84	76,8	20	16	12		2x1,7	84/76,8/20 x 16/12	6004-ZZ		80 204 (double groove)
					10					
90	76	17	20	10		5,5	90/76/17 x 20/10	6003-ZZ		80 117
90	80	17	20	14	10		90/80/17 x 20/14	6303-2RS		80 232
90	76	14	20/26	10		5,5	90/76/14 x 20/26/10	6003-ZZ		80 264 (bush)
95	85	17	20	12		5,5	95/85/17 x 20/12	6203-ZZ		80 239

Dimensions in mm. Further dimensions, other plastic, other hardnesses Shore A and special executions on request.